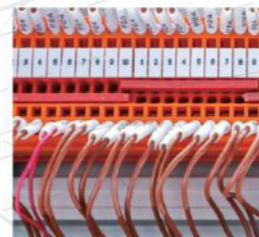


The product is a professional networking cable inspection device that contains wiring tracing, cable order verifying and wiring faults inspection functions.

Specification		
Dimension	Transmitter	Receiver
Weight	139.2g (GT66) 38g (GT67)	119.9g
Size	63*134*31mm	40*200*32mm
Power	1.5V AAA*3batteries	6F22 9V battery
Signal Tracing Transmit Distance	>1km	
Display	LED	
Operating Temperature	-10 ~40°C (14 ~ 104°F)	
Operating Humidity	10-95%RH	
Storage Temperature	-10 ~40°C (14 ~ 104°F)	

Function		
	GT66	GT67
Chargeable and anti-interference	x	√
Long distance wiring tracing	√	√
Internet cable order verifying	√	√
Wiring voltage check	√	√
Wiring voltage polarity check	√	√
Wiring shorts inspection	√	√
Low battery indication	√	√
Adjustment for tracing sensitivity/volume	√	√
Earphone jack output	√	√
Flashlight	√	√

Application



Signal line



Line maintenance



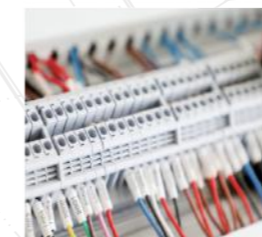
Network cable



Telephone line

Function	GM60	GM62
Long distance wiring tracing	√	√
Internet cable order verifying	√	√
Wiring voltage existence inspection	√	√
Wiring voltage positive or negative characteristic measuring	√	√
Wiring shorts inspection	√	√
Low battery indication	√	x
Tracing sensitiveness and volume adjusting	√	√
Headphone jack output	√	√
Flashlight	√	√

Application



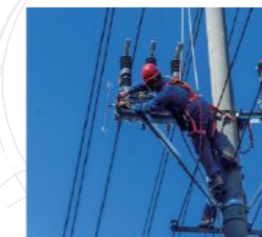
Cable



Telephone line



Signal line



Line maintenance

Specification		
Specification	Transmitter	Receiver
Weight	119.2g	68.8g
Dimension	64*31*119mm	48.6*26*177mm
Power	1.5V AAA*3batteries	6F22 9V battery
Signal Tracing Transmit Distance	>1km	
Display	LED	
Operating Temperature	-10~40°C (14~104°F)	
Operating Humidity	10-95%RH	
Storage Temperature	-20~60°C (-4~140°F)	

buttons

- (1) Power: power button
- (2) V: Voltage testing button
- (3) Ω: Cable shorts, opens inspection
- (4) TEST FAST: Fast cable order verifying button
- (5) TEST SLOW: Slow cable order verifying button
- (6) SCAN FAST: Fast tracing frequency button
- (7) SCAN NOR.: Normal tracing frequency button
- (8) SCAN SLOW: Slow tracing frequency button

