

Radiation survey meter can test electric field radiation and magnetic field emission to reach the optimal test result. It is used to test and learn electromagnetic radiation situation indoor and outdoor. It is equipped with a built-in electromagnetic radiation sensor, which can display the radiation value on LCD digital display after processing by the control micro-chip. You can make reasonable processing or take effective prevention measures toward the electromagnetic radiation according to the test result.

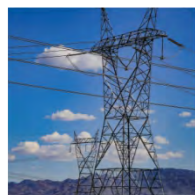
Function	WT3120	WT3121
One detector for two usage, simultaneous detection of electric and magnetic field radiation	√	√
Color-screen display	×	√
Sound and light alarm, automatic alarm above safe value	√	√
Data lock, press one button to lock radiation value	√	√
LCD graphic display of radiation value trend	√	√
Radiation assessment, indicating if current radiation value is at safe level	√	√
Stylish appearance, easy to operate with one hand, move or perform on-site measurement.	√	√

Specification	Electric field		Magnetic field
	Unit	V/m	μT
Accuracy	1V/m	0.01μT	
Range	1V/m-1999V/m	0.01μT-99.99μT	
Alarm threshold	40V/m	0.4μT	
Reading display	3-1/2digit LCD		
Measurement bandwidth	5Hz—3500MHz		
Sampling time	About 0.4 second		
Measurement mode	Dual mode at the same time		
Overload indication	Maximum value of measurement range on LCD		
Operation temperature	0°C~50°C		
Operation humidity	Relative humidity below 80%		
	WT3120	WT3121	
Working voltage	9V	3.7V	
Power	6F22 9V battery	3.7V lithium battery	
Dimensions	63.6*31*125.8mm	60*25*133mm	
Weight	146g	121g	

- Function**
- ▶ Wood moisture measurement
 - ▶ Moisture limit value setting
 - ▶ Wood density selection
 - ▶ Backlight control function
 - ▶ Data hold function
 - ▶ Battery level indication
 - ▶ Auto power-off function
 - ▶ Temperature measurement and temperature unit conversion

Specification	
Moisture measurement range	0.5%~79.5%
Temperature measurement range	0~50°C/32~122°F
Measurement error/moisture value	±1.5%
Temperature value	±2°C/±3.6°F
Wood density range	0.27g/cm³~1.05g/cm³
Detection depth	0~50mm
Dimension	63.6*31*125.8mm
Weight	146g

Application



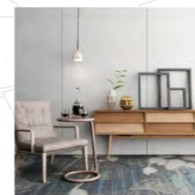
High-voltage line radiation



Office



Protective equipment effect test



Home radiation monitoring



(WT3120)



(WT3121)

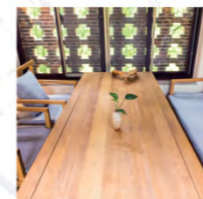


USB connector (Rechargeable lithium battery)



USB cable

Application



Wooden table



Wooden cabinet



Wood



Wooden plate



Wood moisture induction area

