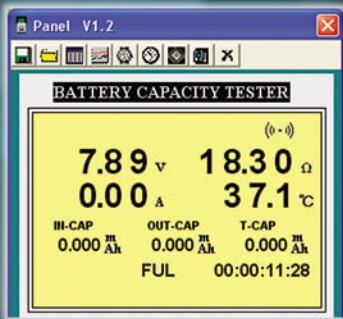
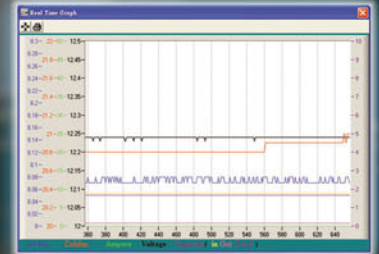


33 Battery Capacity Tester

- Reads the "True Life" of battery Capacity (Resistive / Voltage / Current & Temperature)
- Wide Range: 0 ~ 1,200AH
- Built-In Comparator
- RS-232 Interface / Software
- Datalogging function
- Load Test Analysis (Charge / discharge)

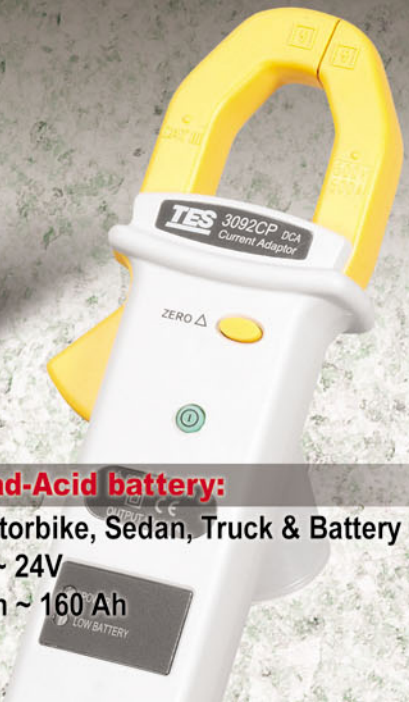
Load Test



Carbon-Zinc, Alkaline battery:
 (AA, AAA, C, D / 9V)
 1.5V / 9V
 625mAh ~ 8350mAh

Lithium battery:
 (Cellular, Camera, Notebook)
 3.6V ~ 14.8V
 650mAh ~ 7200mAh

Lead-Acid battery:
 (Motorbike, Sedan, Truck & Battery Bank)
 6V ~ 24V
 2 Ah ~ 160 Ah



TES-33 Battery Capacity Tester RS -232



FEATURES

Test Condition Without Shutting Down Battery.
Simultaneously Measure Battery Resistance, Voltage, Current, Temperature.

- Auto-hold and Auto-data storage.
- Comparator Function.
- Rates Conditions as Pass, Warning, or Fail.
- Memory and Read Function
- Compact and Lightweight.
- RS232 PC Interface



APPLICATIONS

Storage Battery Systems Battery Capacity Testers,
Check battery condition in seconds, with the battery in service!



SPECIFICATION

Battery Types Tested	Compact storage batteries, Alkali and lead-acid batteries..
Battery Capacity	0 to 1200AH
Resistance	Ranges : 4mΩ, 40mΩ, 400mΩ, 4Ω, 40Ω, 400Ω Resolution : 1μΩ , 10μΩ , 100μΩ , 1mΩ , 10mΩ , 100mΩ Accuracy : 4mΩ : ±2% reading ± 8digits) / 40mΩ~400Ω : ±0.8% reading ±6digits)
Measurement Condition	Current : Approx. 40mA, 4mA, 400μA, 40μA, 4μA Frequency : 1KHz±30Hz
DC Voltage	Range : 6V, 60V Resolution : 1mV, 10mV Accuracy : ±0.1%rdg ±6digits)
Temperature	Range : -20°C to 60°C -4°F to 140°F Resolution :0.1°C / 0.1°F Accuracy : ±1°C / ±1.8°F
DC Current	Range : 60A , 600A Resolution : 0.01A , 0.1A Accuracy : 60A : ±2%rdg+20dgt , 600A : ±2%rdg+2dgt
Open Circuit Voltage	5V max
Manual Data Memory	999 data sets
Continuous Data Memory	6000 data sets (only use PC download)
Comparator	Setting : Resistance upper and lower limits and voltage throughhold limit. Memory : 99 sets of values

Operating Environment	0°C to 40°C 32 °F to 104°F, 80%RH or less, non -condensing.
Maximum Input Voltage	60VDC
Power Supply or AC Adapter	Six AA size 1.5V alkaline batteries
Battery Life	5.5 hours
Weight	Approx. 530g including batteries
Dimensions	Approx. 198(L × 94(W × 49(H)mm
Accessories	Clip – type test lead with temperature sensor, Pin – type test lead, 3092CP DCA current adaptor, Zero adjustment board, Instruction manual, batteries, AC adaptor, Optical RS232 cable, CD PC software, Carrying case.