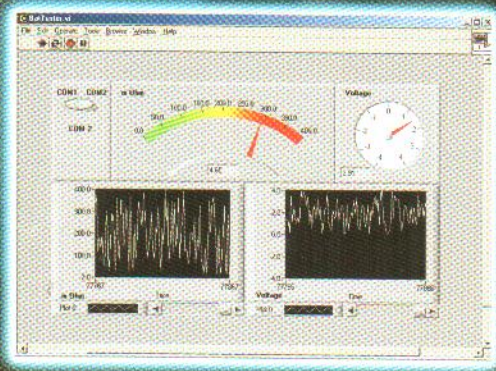


TES

Reliable in Quality

32 Battery Capacity Tester

- Right Device to know the "True Life" of your battery capacity. (Resistive/Voltage).
- On-line testing without shutting down battery.
- Built in Comparator.
- RS-232 interface & Software.
- Datalogging function.



TES-32 Battery Capacity Tester (RS-232)

Storage Battery Systems Battery Capacity Testers,
Check battery condition in seconds, with the battery in service !

FEATURES :

- Test Condition Without Shutting Down Battery.
- Simultaneously Measure Battery Resistance, Voltage.
- Comparator Function.
- Rates Conditions as Pass, Warning, or Fail.
- Memory and Read Function.
- Compact and Lightweight.
- RS232 PC Interface.

SPECIFICATIONS:

Battery Types Tested	Compact storage batteries, Alkali and lead-acid batteries.
Battery Capacity	0 to 500AH
Resistance	Ranges : 40m Ω , 400m Ω , 4 Ω , 40 Ω Resolution : 10 $\mu\Omega$, 100 $\mu\Omega$, 1m Ω , 10m Ω Accuracy : \pm (1%reading + 8digits) on all ranges.
Measurement	Current : 50mA, 5mA, 500 μ A, 50 μ A Frequency : 1KHz Accuracy : \pm 10%
Voltage	Measurement : 4V, 40V Resolution : 1mV, 10mV Accuracy : \pm (0.1%rdg \pm 6digits)
Open Circuit Voltage	\leq 6V
Data Memory	999 data sets
Continuous Data Memory	6000 data sets (only use PC download)
Comparator	Setting : Resistance upper and lower limits and voltage throughhold limit Memory : 99 sets of values
Operating Environment	0 $^{\circ}$ C to 50 $^{\circ}$ C (32 $^{\circ}$ F to 122 $^{\circ}$ F), 80%RH or less, non-condensing.
Maximum Input Voltage	50VDC
Power Supply or AC Adapter	Six size AAA 1.5V
Battery Life	7 hours
Dimensions/Weight	Approx. 250(L) x 100(W) x 45(H)mm Approx. 500g including batteries.
Accessories	Instruction manual, Batteries, Test probe, Software, RS232 cable
Optional Accessories	AC adaptor (Isolated output 9VDC)



TES ELECTRICAL ELECTRONIC CORP.

7F, No.31 Lane 513, Rui Guang Rd., Neihu Dist, Taipei, Taiwan, R.O.C.

Tel : (02) 2799-3660 Fax : 886-2-2799-5099

E-mail : tes@ms9.hinet.net <http://www.tes.com.tw>