

**8:1 ENERGY AUDIT IR THERMOMETER/SCANNER
WITH STAR BURST LASER TARGETING – IRTC50**

Ideal for energy auditors, building inspectors, HVAC technicians, electricians, manufacturing technicians, food processing inspectors and homeowners.

FEATURES:

- Setpoint band options of 1°, 5° and 10°F (0.5°, 3°, 5.5°C)
- Red or blue light and fast or slow buzzer signal when the target temperature is above or below the reference temperature ± the setpoint
- Unique Star Burst laser targeting system helps approximate the target spot size
- Large backlit LCD
- Releasing trigger holds reading
- Display and backlight turn off after 15 seconds of inactivity
- Auto-power off after 60 seconds of inactivity
- CE and ROHS approved

SPECIFICATIONS:

- ◆ Distance to Spot Ratio: 8:1
- ◆ Measurement Range: -40° to 428°F (-40° to 220°C)

- ◆ Measurement Accuracy: ±4°F/C or ±2% of reading above 32°F (0°C); ±3°F/C or ±3% of reading below 32°F (0°C)
- ◆ Display Resolution: 0.1° (F or C)
- ◆ Emissivity: Fixed at 0.95
- ◆ Response Time: 0.5 seconds
- ◆ Operating Temperature: 32° to 104°F (0° to 40°C) @ <90%RH
- ◆ Laser Power: <3mW (Class 3R)
- ◆ Dimensions: 5.31 x 1.65 x 6.81 in. (135 x 42 x 173mm)
- ◆ Weight: 6.24 oz. (117g) without battery
- ◆ Power Source: 1 “9V” battery (included)

INCLUDES:

- Battery • User’s Manual
- 1 Year Limited Warranty

| UPC | NO. |
|---------|--------|
| 01442 4 | IRTC50 |

Class 3R Laser Product
Laser radiation!
Avoid direct eye exposure!



**CALIBRATABLE MULTI-FUNCTION PSYCHROMETERS –
EP8703, EP8709, EP8710**

Ideal for accurately measuring any environment’s temperature, relative humidity (RH), dew point and other condensation parameters.

FEATURES:

- Jumbo backlit display with double (EP8703, EP8709) or triple (EP8710) readout
- Field calibratable using optional 33% and 75% salts
- Data hold and Max/Min buttons (EP8709 and EP8710 only)
- Also calculates and displays wet bulb temperature (EP8709 and EP8710 only)
- Using included external probe (EP8710 only), can also measure: 1) the difference between an object’s internal and surface temperatures or 2) an object’s condensation temperature—the difference between its surface temperature and the dew point temperature
- °F/°C switch
- 20-minute Auto Power Off (can be disabled for calibration)
- Low battery indicator

SPECIFICATIONS:

- ◆ Ambient Temperature Measurement Range: 14° to 122°F (-10° to 50°C)
- ◆ Ambient Temperature Measurement Accuracy/Resolution: ±1.8°F (±1.0°C)
- ◆ External Temperature Probe Measurement Range (EP8710 only): 14° to 158°F (-10° to 70°C)

- ◆ External Temperature Probe Measurement Accuracy (EP8710 only): ±1.8°F (±1°C)
- ◆ External Probe Cord Length: 48 in. (1.22m)
- ◆ Temperature Measurement Resolution: 0.1°
- ◆ RH Measurement Range: 0 to 99.9%
- ◆ RH Measurement Accuracy: ±3% from 5% to 95% RH
- ◆ RH Measurement Resolution: 0.1%
- ◆ RH Response Time: <80 seconds
- ◆ Current Consumption: <15mA
- ◆ Battery Life: 60 hours (typical)
- ◆ Dimensions: 7.56 x 2.40 x 1.57 in. (192 x 61 x 40mm)
- ◆ Weight (without battery): 3.77 oz. (107g)
- ◆ Power Source: (1) “9V” battery (included)

INCLUDES:

- Sensor Protection Cap
- “9V” Battery • User’s Manual
- External Temperature Probe (EP8710 only)
- 1 Year Limited Warranty

| UPC | NO. |
|---------|---|
| 01632 9 | EP8703 |
| 01630 5 | EP8709 |
| 01631 2 | EP8710 |
| 15060 3 | HR33 Calibration Salt MgCl 33% (optional) |
| 15070 2 | HR75 Calibration Salt NaCl 75% (optional) |



USB Temperature-Humidity Data Loggers

MOISTURE/TEMPERATURE & HUMIDITY

- HT10: RH/Temp/GPP Data Logger**
- HT20: RH/Temp/GPP Data Logger w/ LCD**
- HT50: RH/Temp/GPP Data Logger w/ LCD & IRT**

These data loggers can be deployed on a job site or in key areas of a facility and left unattended for days, weeks or months. The temperature and humidity readings they make and collect can be uploaded to a PC and viewed in Excel, making it easy to spot trends and unexpected excursions.

APPLICATIONS:

- **Water damage restoration** — Units can be deployed and left in place over duration of the job to monitor the drying process
- **Process control** — Simpler, more cost-effective monitoring of office buildings, greenhouses, food and equipment storage facilities, wineries, freezers, shipping containers, HVAC/R installations, computer rooms, labs, libraries and museums
- **Electronics manufacturing** — Monitor and/or data log RH/temp to control high-voltage static discharge

FEATURES & BENEFITS:

- One button starts/stops data logging without a PC
- Plug-and-play USB 2.0 interface; no need for cables, cradles or docks
- Large storage capacity: Up to 16,000 pairs of RH and temperature readings
- 3-1/2-digit LCD displays real-time temperature and RH readings, device working status and “memory full” (HT20 and HT50 only)
- Built-in IR thermometer for checking temperature of vents and surfaces (HT50 only)
- Included software is used to set sampling time & Hi/Lo temp and RH alarm setpoints
- Software also calculates dew point and wet bulb temperatures, calculates and plots absolute humidity in units of GPP or g/kg, and displays data logs as time-based graphs synchronized to your PC’s clock
- One-click exporting of logs to Excel or Word
- Long battery life (up to one year)

INCLUDES:

- Windows®-Compatible CurveViewer Software
- USB Extension Cable • Battery • User’s Manual
- 1 Year Limited Warranty

| UPC | NO. |
|---------|---|
| 01501 8 | HT10 |
| 01503 2 | HT20 |
| 01504 9 | HT50 |
| 72015 8 | BA10 Extra “1/2 AA” Battery (optional) |



HT10
N

GPP
g/kg

USB
Interface
Interfaz



HT20
N

GPP
g/kg

USB
Interface
Interfaz

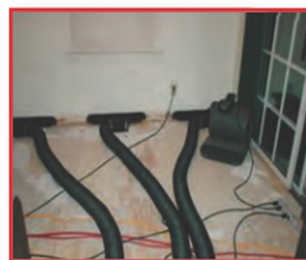


HT50
N

IRT
Built-in
Construit en
Construido en



Magnetic back for easy storage and deployment



Monitor water damage restoration

GPP
g/kg

USB
Interface
Interfaz

PINLESS LCD MOISTURE METER W/TRICOLOR BAR GRAPH – MMD7NP

Ideal for measuring moisture content of wood and other construction materials.

FEATURES:

- Separate settings for drywall, masonry, softwood and hardwood
- 2 in. backlit LCD + 3-color LED bar graph
- Non-invasive technology with 3/4 in. maximum sensing depth
- ±4% accuracy on wood
- Auto calibrating
- Data hold
- Separate out-of-range alarms for wood and building materials

SPECIFICATIONS:

- ◆ Measurement Ranges: 0 to 53% for softwood; 0 to 35% for hardwood
- ◆ Measurement Accuracy/Resolution: ±4%/1%
- ◆ Maximum Sensing Depth: 3/4 in.
- ◆ Auto Power Off (APO) Trigger: 2 minutes of inactivity
- ◆ Operating Temperature: 32° to 104°F
- ◆ Dimensions: 6.7 x 2.9 x 1.2 in.
- ◆ Weight: 5.4 oz. (152g) without battery
- ◆ Power Source: 1 “9V” battery (included)

INCLUDES:

- Battery • User’s Manual
- 1 Year Limited Warranty

| UPC | NO. |
|---------|--------|
| 01583 4 | MMD7NP |



MMD7NP

6-IN-1 PSYCHROMETER WITH ENTHALPY – EP8711P

Enables HVAC/R technicians to measure six heat-related parameters with a single instrument. The EP8711P can make the in-duct measurements of an evaporator unit's output needed to fine-tune the system for optimum efficiency. By calculating the enthalpy of the system, the EP8711P allows a technician to compare a system's efficiency before and after charging with a refrigerant.

FEATURES:

- Measures: 1) ambient temperature, 2) relative humidity (RH), 3) dew point, 4) wet bulb temperature, 5) mixing ratio in grains per pound (GPP) or g/kg, and 6) enthalpy in Btu/lb. or kJ/kg
- 6-in. long sensor with graduated insertion depth markings can be swiveled inside vent or grille
- Large 4-digit LCD
- °C/°F switch
- Auto Power Off
- Low battery indication

SPECIFICATIONS:

- ◆ Temperature Range: -4° to 158°F (-20° to 70°C)
- Temperature Accuracy: ±0.7°F (±0.3°C)
- Temperature Resolution: 0.1°
- RH Range: 0 to 100%
- RH Accuracy: ±2% from 10% to 90% RH
- RH Resolution: 0.1%
- Dew Point Range: -76° to 158°F (-60° to 70°C)
- Wet Bulb Range: -49° to 158°F (-45° to 70°C)
- Mixing Ratio Range: 0 to 999 GPP (0 to 280g/kg)
- Enthalpy Range: -8 to 318 Btu/lb. (-20kJ/kg)
- Dimensions: 8.23 x 1.85 x 1.85 in. (209 x 47 x 47mm)
- Power Source: Three “AAA” batteries (included)

INCLUDES:

- Sensor Protection Cap
- Batteries
- User’s Manual
- 1-Year Limited Warranty

| UPC | NO. |
|---------|---------|
| 01677 0 | EP8711P |



EP8711P



Measuring a system's enthalpy of vaporization

MOISTURE/TEMPERATURE & HUMIDITY

PINLESS MOISTURE METER & PSYCHROMETER

TOLL FREE (800) 697-8665
 FAX (212) 431-6499
 www.generaltools.com

Precision Multi-Species Wood Moisture Meter – MMD22P

MMD22P moisture meter measures the moisture content by detecting the electrical resistivity of the material using two pins. The tool has adopt low consumption single chip smart design, the moisture content is displayed by LED indicators. MMD22P has advantages of portable size, easy to operate and rapidly measuring, a suitable tool to carry at working field.

SPECIFICATIONS:

- ◆ Measuring range :
 - Wood:8%~22%
 - Building materials:1.5~15.5%
- ◆ Measuring accuracy : $\pm 2\%$
- ◆ Power supply : 1pcs of 9V battery (6F22 or 6LR61, not included)
- ◆ Working current : <50mA
- ◆ Working temperature : $0^{\circ}\text{C} \sim 50^{\circ}\text{C}$
- ◆ Working humidity : <90% RH non-condensing
- ◆ Storage environment : $-20^{\circ}\text{C} \sim 60^{\circ}\text{C}$, $\leq 85\%$ (w/o battery)
- ◆ Dimension : 145mm \times 62mm \times 27 mm
- ◆ Weight : About 76 g (w/o battery)

FEATURES:

- ◆ Auto power off function (No action in 3 minutes)
- ◆ Low battery indication (< 7V)
- ◆ Power supply : 1pcs of 9V battery (6F22 or 6LR61, not included)



4-IN-1 SOIL CONDITION METER – DSMM600

Ideal for measuring the temperature, pH and moisture content of soil and the intensity of sunlight shining on it.

FEATURES:

- Measures soil pH and temperature
- Also gauges soil moisture content within five levels and sunlight intensity within nine levels
- Large backlit triple readout LCD
- $^{\circ}\text{F}/^{\circ}\text{C}$ switch

SPECIFICATIONS:

- ◆ pH Range: 3.5 to 9.0
- ◆ pH Accuracy and Resolution: ± 0.5 pH units
- ◆ Temperature Measurement Range: 16° to 122°F (-9° to 50°C)
- ◆ Temperature Accuracy / Resolution: $\pm 1.8^{\circ}\text{F}$ (1°C) / 1° (F or C)
- ◆ Moisture Level Ranges: <5% (DRY+), 5 to 10% (DRY), 10 to 20% (NOR), 20 to 30% (WET), >30% (WET+)
- ◆ Light Level Ranges: From <500 Lux (LOW-) to >120,000 Lux (HGH+)

- ◆ LCD Size: 1.8 in. (46mm) diagonal; main readout has 0.48 in. (12mm) high digits
- ◆ Operating Temperature: 41° to 104°F (5° to 40°C) @ 5 to 95%RH, non-condensing
- ◆ Dimensions of Meter Body: 4.8 x 2.5 x 1.4 in. (122 x 63 x 36mm)
- ◆ Dimensions of Probe (Length x Diameter): 7.9 x 0.24 in. (200 x 6mm)
- ◆ Weight (without battery): 2.9 oz. (81g)
- ◆ Power Source: "9V" Alkaline battery (not included)

INCLUDES:

- User's Manual
- 1-Year Limited Warranty

| UPC | NO. |
|---------|---------|
| 01680 0 | DSMM600 |

