

Coating Thickness Tester



Dual Technology Features Automatic Selection of Magnetic Induction or Eddy Current Measurement Techniques



EMC
EN: 61326

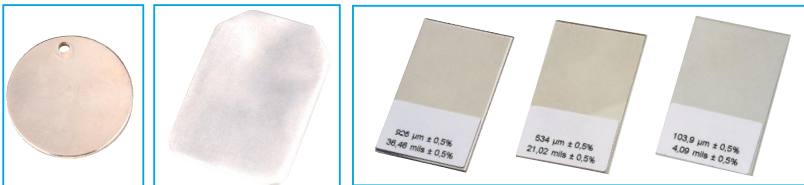
Model 156

Features

- Non-magnetic coatings(e.g. paint, zinc)on steel
- Insulating coatings(e.g. paint)on no-ferrous metals
- No-ferrous metals coatings on insulating substrates
- Menu operation system
- Two measuring mode: CONTINUE and SINGLE mode
- Two working Mode: DIRECT and GROUP mode
- Statistic Display: AVG, MAX, MIN, NO., S.DEV
- One point calibration, two points calibration and basic calibration easily
- Memory for 400 readings(80 DIRECT and 320 GROUP readings)
- Delete single readings and all group readings easily
- High alarm and Low alarm for all working modes
- Low battery, error indication
- USB interface for PC software

Specifications

Sensor probe	F	N
Working principle	magnetic induction	Eddy current principle
Measuring range	0~1250um	0~1250um
Guaranteed tolerance (of reading)	(+/- 3%+1)um	(+/- 3%+1.5)um
Low range Precision	0.1um	0.1um
Minimum curvature radius	1.5mm	3mm
Diameter of Minimum area	7mm	5mm
Basic critical thickness	0.5mm	0.3mm



Calibration Iron Calibration Aluminum Precision Standard



Size(HxWxD): 113.5mm x 54mm x 27mm

Weight: 110g

Accessories:

Two "AAA" batteries, USB cable, CD, Calibration Iron, Calibration Aluminum, Precision Standard, gift box with carrying case.