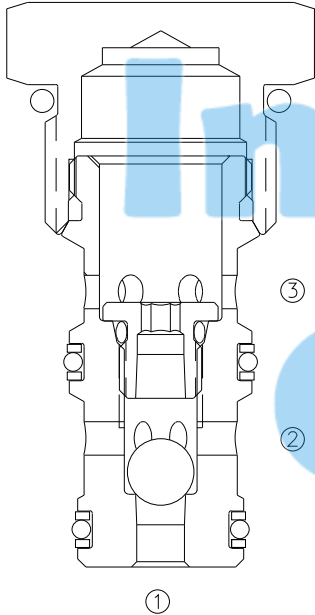


LSLV-10

梭阀

Ball Type, Cartridge Shuttle Valve



OPERATION

The valve allows the check ball to move away from inlet port ① or ③ with the greatest differential pressure and seat against the other inlet port having the least differential pressure providing a flow path to outlet port ②.

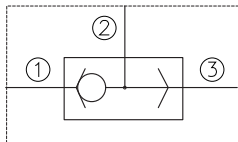
当①口超过③口的压力时，①到②打开；
当③口超过①口的压力时，③到②打开；

FEATURES

特性

- Excellent response to pressure changes. 积极响应压力变化。
- Hardened working parts for long life. 长寿命的阀。
- Low leakage. 低泄漏。
- Industry common cavity. 工业通用插孔。
- Compact size. 紧凑的结构。

SYMBOL



SPECIFICATIONS

技术参数

Operating Pressure (工作压力) : 207 Bar

Flow (流量) : See PRESSURE DROP VS. FLOW graph.

Internal Leakage(内泄漏): 5 drops/min. max. at 207 Bar

Temperature(温度) : -22°F to +250°F (-30°C to +120°C)

Recommended Filtration (推荐的过滤网) :

Critical Application – ISO 16/12

Non-Critical Application – ISO 19/15

Fluids (流体): Mineral-based fluids.

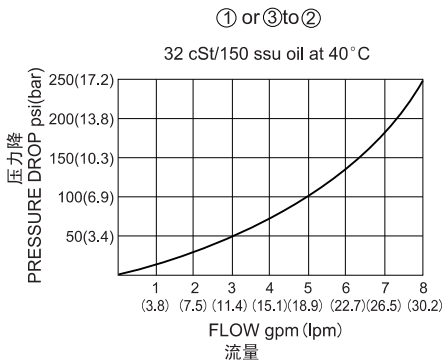
For other fluid compatibility, consult factory.

Cavity (插孔) : 10-3, see page 403

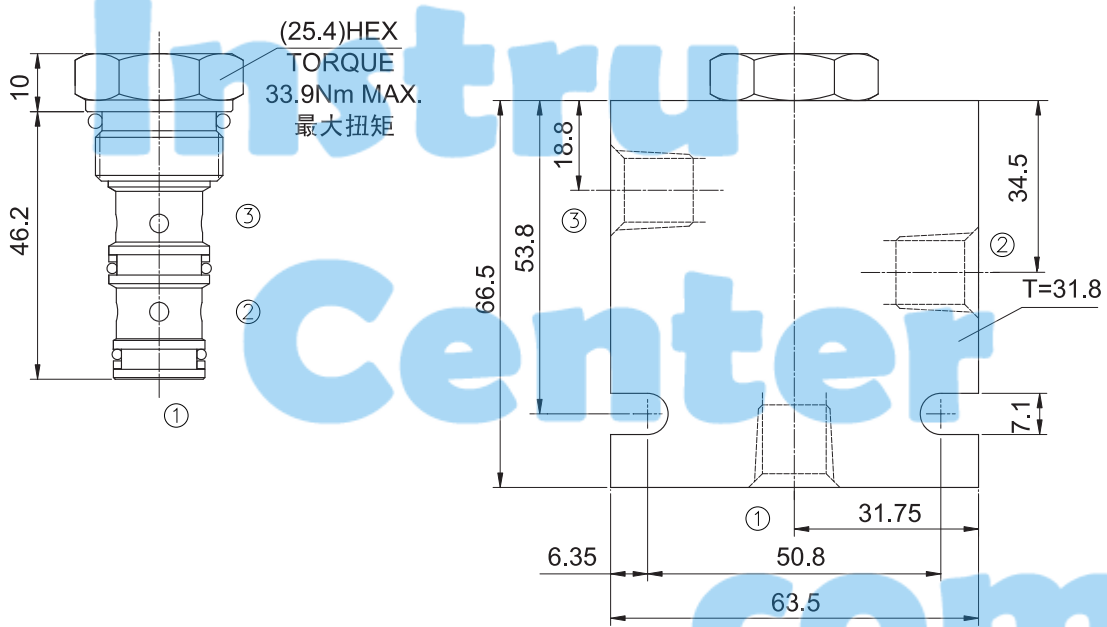
Body Material (阀块材料) : Anodized 6061T6 aluminum alloy rated at 207 Bar.

6061-T6, 允许使用最大压力207Bar.

PRESSURE DROP VS. FLOW



INSTALLATION DIMENSIONS



Unit=Millimeters

TO ORDER

