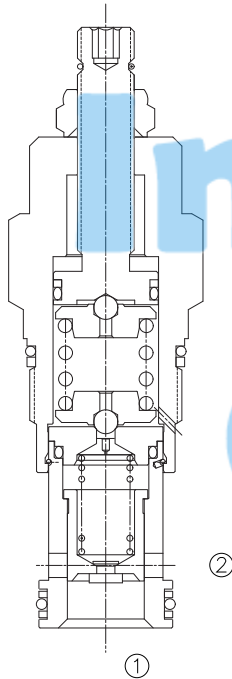


LRPGC (导压操作, 平稳响应型)

Pilot-Operated smooth and quiet relief valve



OPERATION

The valve are normally closed, pressure-limiting valves used to protect hydraulics components from pressure transients. When the pressure at the inlet (port ①) reaches the valve setting, the valve starts to open to tank (port ②), throttling flow to limit the pressure rise. The valve are accurate, have low pressure rise. flow they are smooth and quiet, and are moderately fast.

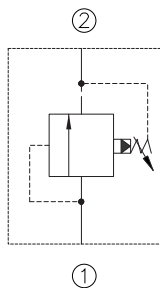
先导式滑阀型溢流阀用于保护系统的压力瞬时过载。当①口压力超过阀的设定时，①口到②口溢流过载，节流限制系统压力升高。

FEATURES

特性

- Suitable for use in cross port relief circuits. If used in cross port relief circuits, consider spool leakage. 适用于溢流阀对装系统。用在这种系统中，应考虑阀内泄漏。
- Not suitable for use in load holding applications due to spool leakage. 不适合用在保压系统中。
- Back pressure on the tank port (port 2) is directly additive to the valve setting at a 1:1 ratio. 2口背压会直接1:1影响到阀的设定。
- Hardened poppet and seat for long life. 长寿命的阀。
- Compact size. 紧凑的结构。

SYMBOL



SPECIFICATIONS

技术参数

Max. Operating Pressure(最大工作压力): 350 Bar

Flow(流量): See PRESSURE DROP VS.FLOW graph.

Internal Leakage(内泄漏): 50 cc/min. at 70 Bar.

Factory Pressure Setting Established at 4gpm(15L/min).

工厂的设定是指当溢流阀开启时(流量为15L/min)的压力

Response Time - Typical(响应时间): 10ms

Standard Spring Ranges(弹簧调压范围):

A	7 to 210 Bar ,	Preset=70 Bar
B	3.5 to 105 Bar ,	Preset=70 Bar
C	10.5 to 420 Bar ,	Preset=70 Bar
D	1.7 to 55 Bar ,	Preset=28 Bar
E	1.7 to 28 Bar ,	Preset=14 Bar
W	10.5 to 315 Bar ,	Preset=70 Bar
N	4 to 55 Bar ,	Preset=28 Bar
Q	4 to 28 Bar ,	Preset=14 Bar

Temperature(温度): -22°F to +250°F (-30°C to +120°C)

Fluids(流体): Mineral-based fluids.

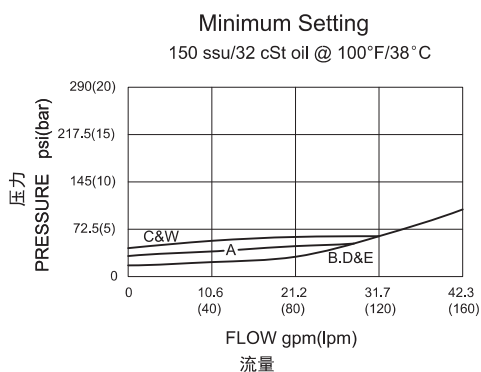
For other fluid compatibility, consult factory.

Cavity(插孔): SUN T-3A, see page 409

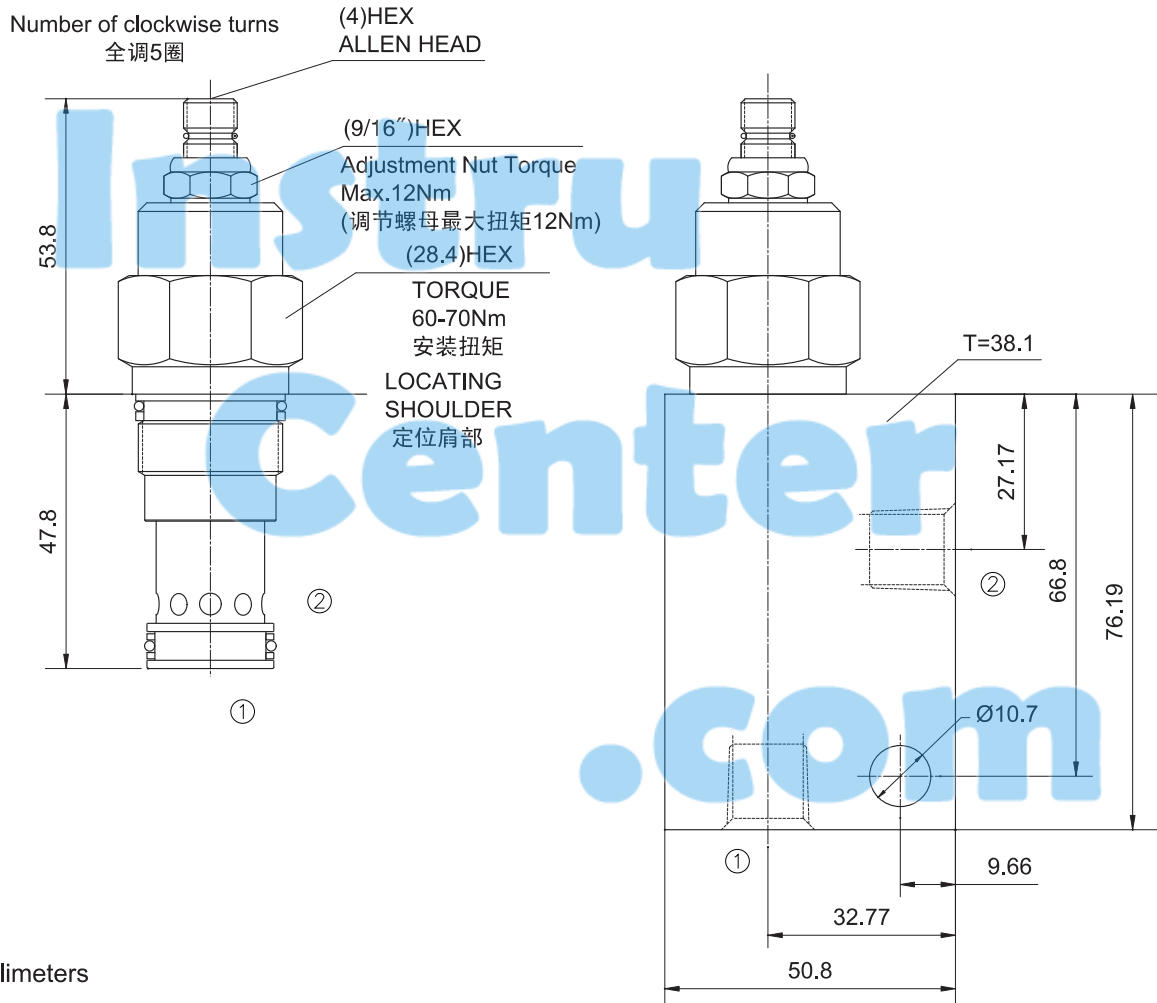
Body Material(阀块材料): steel rated at 350 Bar.

钢材, 允许使用最大压力350 Bar。

PRESSURE DROP VS. FLOW



INSTALLATION DIMENSIONS



Unit=Millimeters

TO ORDER

LRP * C - * * * - * *

FAST-ACTING,PILOT OPERATED
BALANCED PISTON RELIEF VALVE
先导式溢流阀

FLOW 流量
G = 200 L/min.

CONTROL 控制方式
L=Standard Screw Adjustment

BODY PORTING 阀块油口
8T = SAE 8 10T=SAE10
3G=G 3/8 4G=G 1/2
Other porting is available.
其他螺纹油口是可选择的。
(Omit for Cartridge only 省略为不带阀块)

Seal Kits 油封
N = Buna N
V = Viton

SPRING RANGE 弹簧调压范围
A = 100-3000psi(7-210bar) preset: 1000psi(70bar)
B = 50-1500psi(3.5-105bar) preset: 1000psi(70bar)
C = 150-6000psi(10.5-420bar) preset: 1000psi(70bar)
D = 25-800psi(1.7-55bar) preset: 400psi(28bar)
E = 25-400psi(1.7-2 bar) preset: 200psi(14bar)
W = 150-4500psi(10.5-315bar) preset: 1000psi(70bar)
N = 60-800psi(4-55bar) preset: 400psi(28bar)
Q = 60-400psi(4-28bar) preset: 200psi(14bar)