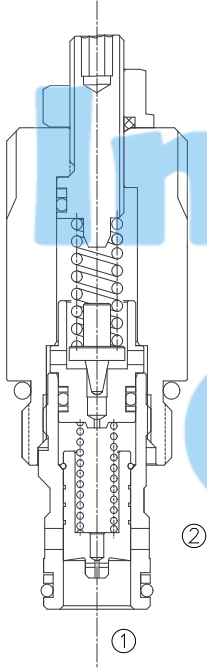


LPSRV2 - 10

先导式溢流阀

Adjustable, Pilot-Operated Cartridge Relief Valve



OPERATION

The valve prevents flow from ① to ② until pressure at ① exceeds the set crack pressure and opens the pilot section. The pilot flow creates a pressure differential across the spool which causes the valve to open allowing flow from ① or ② protecting the circuit from over pressurization.

阀体①口和②口不通，直到①口压力超过设定压力且打开先导阀芯。这样，先导阀芯引起主阀芯两端压力差的变化，压力差达到一定时，①口和②口互通。

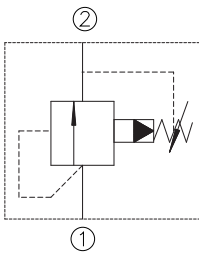
FEATURES

特性

- Fast response to pressure surges.
- Hardened parts for long life.
- Adjustment may be locked in place.
- Industry common cavity.
- Compact size.

迅速响应压力变化。
长寿命的阀。
调节杆可被锁定住。
工业通用插孔。
紧凑的结构。

SYMBOL



SPECIFICATIONS

技术参数

Max. Operating Pressure (最大工作压力): 420Bar

Flow (流量): See PRESSURE DROP VS. FLOW graph.

Internal Leakage(内泄漏): 82cc /min. MAX.to 80% of nominal setting

Reseat Pressure: Nominal 85% of crack pressure

[crack(set) pressure at 0.95lpm/0.25gpm]

Spring Ranges (弹簧调压范围):

0.5 to 55 Bar, Preset(预设):47Bar

35 to 140 Bar, Preset(预设):48Bar

70 to 280 Bar, Preset(预设):88Bar

140 to 420 Bar, Preset(预设):140Bar

Temperature(温度): -22°F to +250°F (-30°C to +120°C)

Recommended Filtration (推荐的过滤网): ISO 19/15

Fluids(流体): Mineral-based fluids.

For other fluid compatibility consult factory.

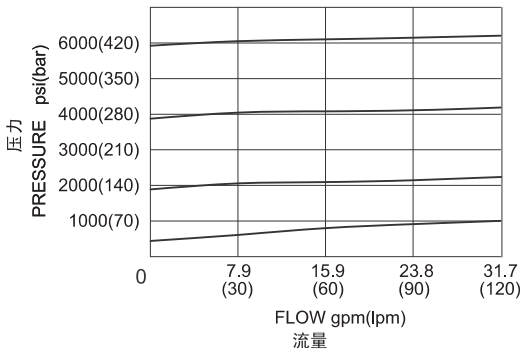
Cavity (插孔): 10-2, see page 403

Body Material (阀块材料): Steel rated at 420 Bar.

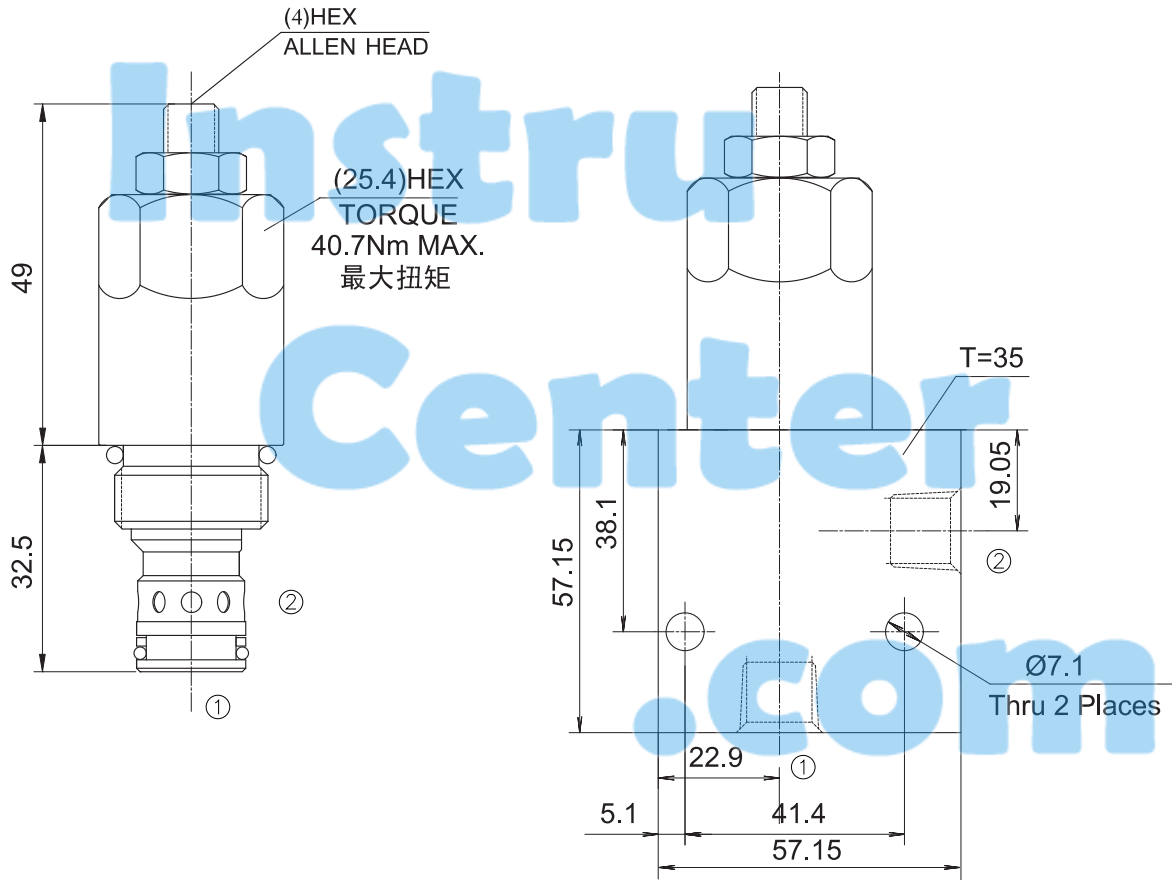
钢材允许使用最大压力420Bar.

PRESSURE DROP VS. FLOW

150 ssu/32cSt OIL @100°F./38°C.



INSTALLATION DIMENSIONS



Unit=Millimeters

TO ORDER

