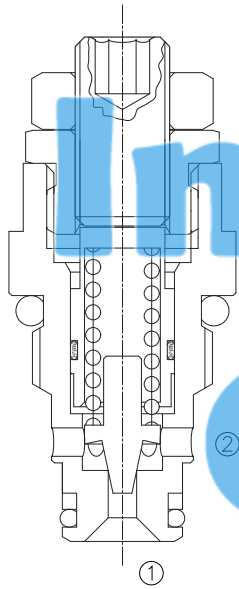


LRV-08 直动式溢流阀

Adjustable, Direct-Acting Cartridge Relief Valve



OPERATION

The valve prevents flow from ① to ② until the set crack pressure at ① is achieved. The poppet then unseats allowing flow from ① to ② protecting the circuit from over pressurization.

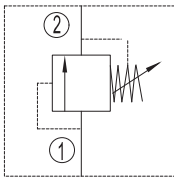
当在①口的压力超过调压弹簧设定的压力时，锥阀芯打开，①到②通，防止系统过压。

FEATURES

特性

- Fast response to pressure surges. 迅速响应压力变化。
- Hardened poppet and seat for long life. 长寿命的阀。
- Adjustment may be locked in place. 调节杆可被锁定住。
- Adjustment prevents spring from going solid. 调节时，弹簧不会被压并。
- Industry common cavity. 工业通用插孔。
- Compact size. 紧凑的结构。

SYMBOL



SPECIFICATIONS

技术参数

Operating Pressure (工作压力) : 250 Bar

Flow (流量) : See PRESSURE DROP VS. FLOW graph.

Internal Leakage(内泄漏): 5 drops/min.MAX.to 80% of nominal setting

Reseat Pressure: Nominal 80% of crack pressure

[crack(set) pressure at 0.95lpm/0.25gpm]

Spring Ranges (弹簧调压范围) :

40 TO 270 BAR; preset (设定压力) : 160 BAR

Temperature(温度) : -22°F to +250°F (-30°C to +120°C)

Recommended Filtration (推荐的过滤网) : ISO 19/15

Fluids(流体) : Mineral-based fluids.

For other fluid compatibility consult factory.

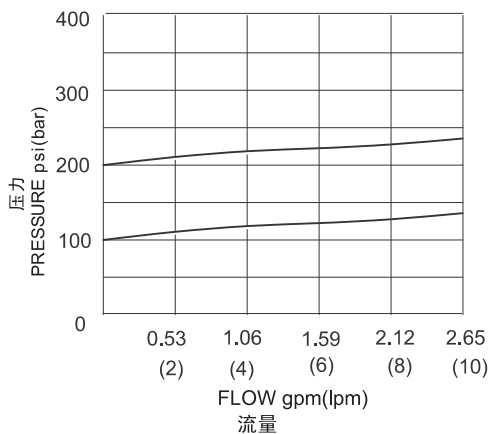
Cavity (插孔) : 08-2, see page 402

Body Material (阀块材料) : Anodized 6061T6 aluminum alloy rated at 207 Bar.

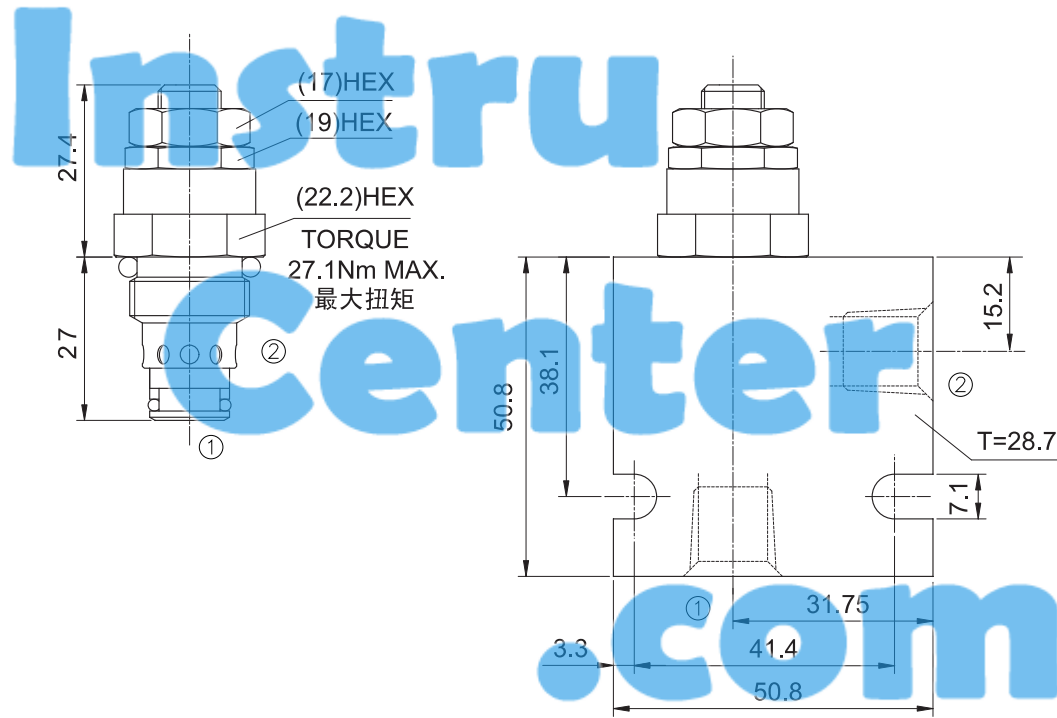
6061-T6, 允许使用最大压力207Bar.

PRESSURE DROP VS. FLOW

32 cSt/150 ssu oil at 38°C



INSTALLATION DIMENSIONS



Unit=Millimeters

TO ORDER

LRV - 08- ** /**** - **

ADJUSTABLE,
CARTRIDGE RELIEF VALVE
直动式溢流阀

CAVITY 插孔

SRING RANGE 弹簧调压范围

- 6=210-610PSI(15-42BAR) PRESET:430PSI(30BAR)
- 10=290-1000PSI(20-69BAR) PRESET:720PSI(50BAR)
- 23=580-2300PSI(40-160BAR) PRESET:1600PSI(110BAR)
- 36=1150-3600PSI(80-250BAR) PRESET:2300PSI(160BAR)

BODY PORTING 阀块油口
4T=SAE4
6T=SAE6
2G=G 1/4
3G=G 3/8
Other Porting is Available
其它螺纹油口也是可能的
(Omit for Cartridge only
省略为不带阀块)

SETTING IN BAR 设定压力 (BAR)
EXAMPLE: 0160=160BAR
(OMIT FOR STANDARD)
省略则为标准