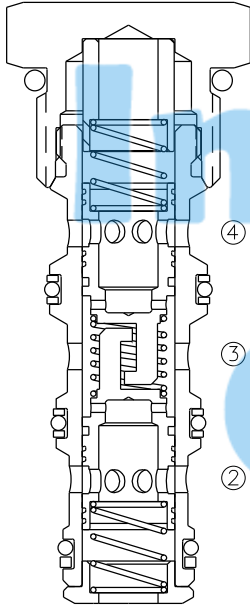


LFD-10

分流/集流阀

Pressure-Compensated, Cartridge Flow Divider/Combiner Valve



OPERATION

In the dividing mode, the valve will divert input flow from port ③ to ports ② and ④ based on the ratio specified, regardless of operating pressure. When the flow direction is reversed the valve will combine flows from ② and ④ to ③ port.

无论系统压力如何,此阀在分流时,从③口的进油,到②,④口按比例分流出。在集流时,从②,④口的进油,合流到③口流出。

Synchronizing flow is provided in both the dividing and combining modes at "bottomed" conditions in cylinder applications and at "stalled" conditions in motor applications.

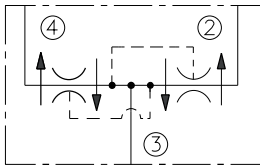
在分流和集流模式下,可应用于当一组油缸顶缸或者其中一液压马达失速状态时均有同步的流量。

FEATURES

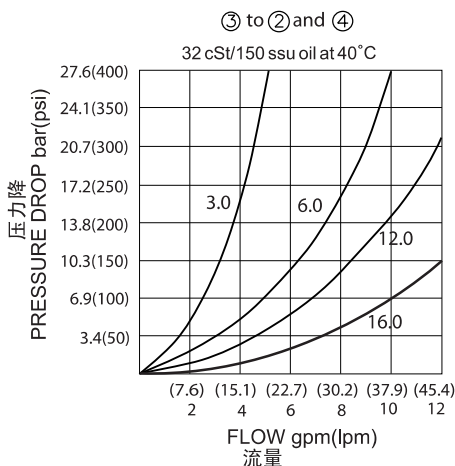
特性

- Pressure-compensated. 压力补偿。
- Quiet response. 平稳响应。
- Industry common cavity. 工业通用插孔。
- Compact size. 紧凑的结构。

SYMBOL



PRESSURE DROP VS. FLOW



SPECIFICATIONS

技术参数

Operating Pressure (工作压力): 240 Bar.

Flow Options (流量选择):

Input Flow: 11.4lpm; Ratio: 50:50; Model: LFD-10-3.0

Input Flow: 22.7lpm; Ratio: 50:50; Model: LFD-10-6.0

Input Flow: 45.4lpm; Ratio: 50:50; Model: LFD-10-12.0

Input Flow: 60.6lpm; Ratio: 50:50; Model: LFD-10-16.0

Flow Tolerances (流量公差):

10% from 25-100% of MAX. rated flow

Temperature (温度): -22°F to +250°F (-30°C to +120°C)

Recommended Filtration (推荐的过滤网): ISO 16/12

Fluids (流体): Mineral-based fluids.

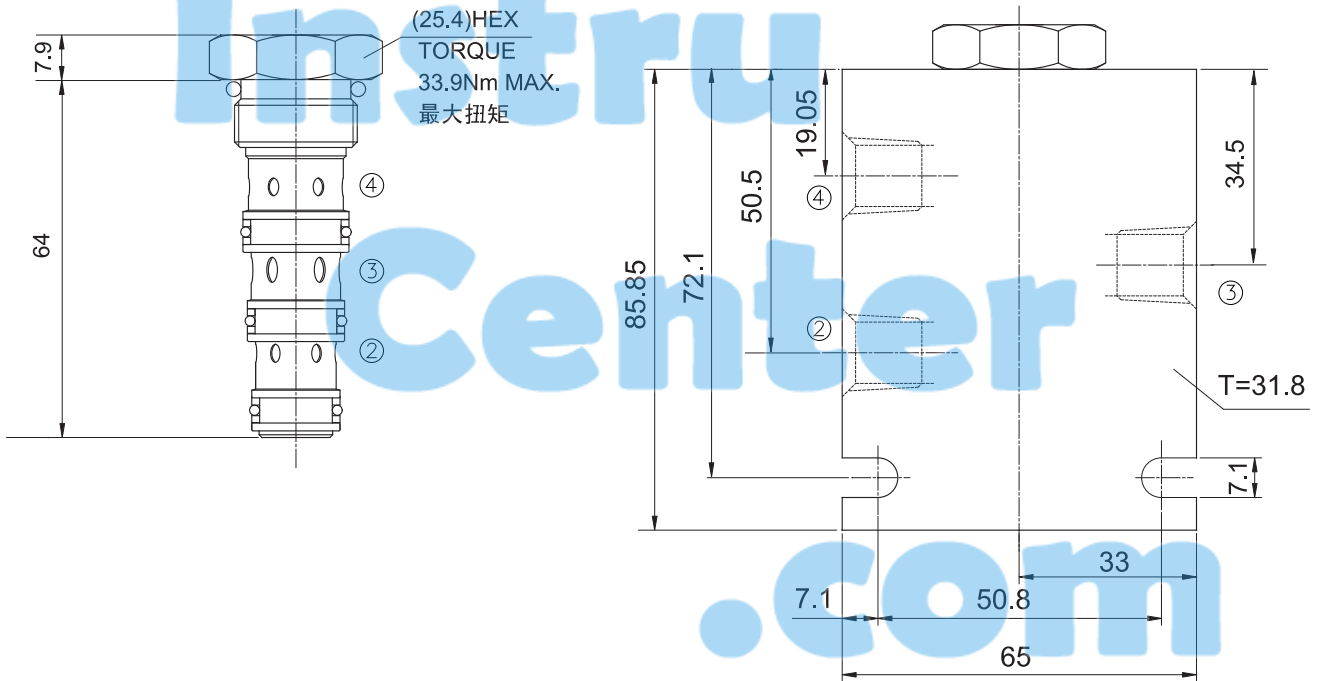
For other fluid compatibility consult factory.

Cavity (插孔): 10-4, see page 403

Body Material (阀块材料): steel rated at 350 Bar.

钢材, 允许使用最大压力350 Bar。

INSTALLATION DIMENSIONS



Unit=Millimeters

TO ORDER

