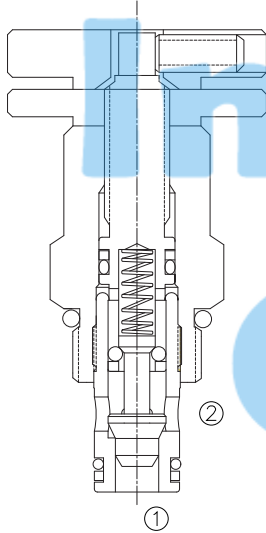


LFC-08

单向节流阀



Adjustable, Cartridge Flow Control Valve

OPERATION

The valve varies flow restriction by adjusting needle in or out. Flow is metered from ② to ①. Free reverse flow is from ① to ②.

节流阀流量大小可通过调节螺杆来实现。②到①节流，①到②开启。

FEATURES

特性

- Hardened poppet and seat for long life. 长寿命的阀。
- Full range of adjustments. 调节范围大。
- Adjustment may be locked in place. 调压杆可锁定住。
- Industry common cavity. 工业通用插孔。
- Compact size. 紧凑的结构。

SPECIFICATIONS

技术参数

Operating Pressure (最大工作压力) : 250Bar

Flow (流量) : See PRESSURE DROP VS. FLOW graph

Internal Leakage (内泄漏) : 3 drops/min. max. at 250 Bar

Temperature(温度) : -22°F to +250°F (-30°C to +120°C)

Recommended Filtration (推荐的过滤网) : ISO 19/15

Fluids (流体) : Mineral-based fluids.

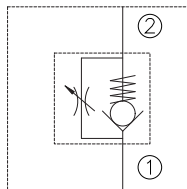
For other fluid compatibility, consult factory.

Cavity (插孔) : 08-2, see page 402

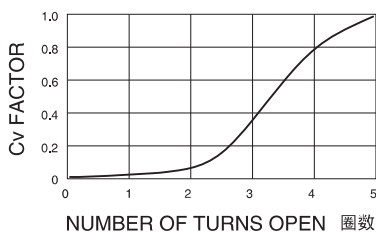
Body Material (阀块材料) : Anodized 6061T6 aluminum alloy rated at 207 Bar.

6061-T6, 允许使用最大压力207Bar.

SYMBOL



PRESSURE DROP VS. FLOW

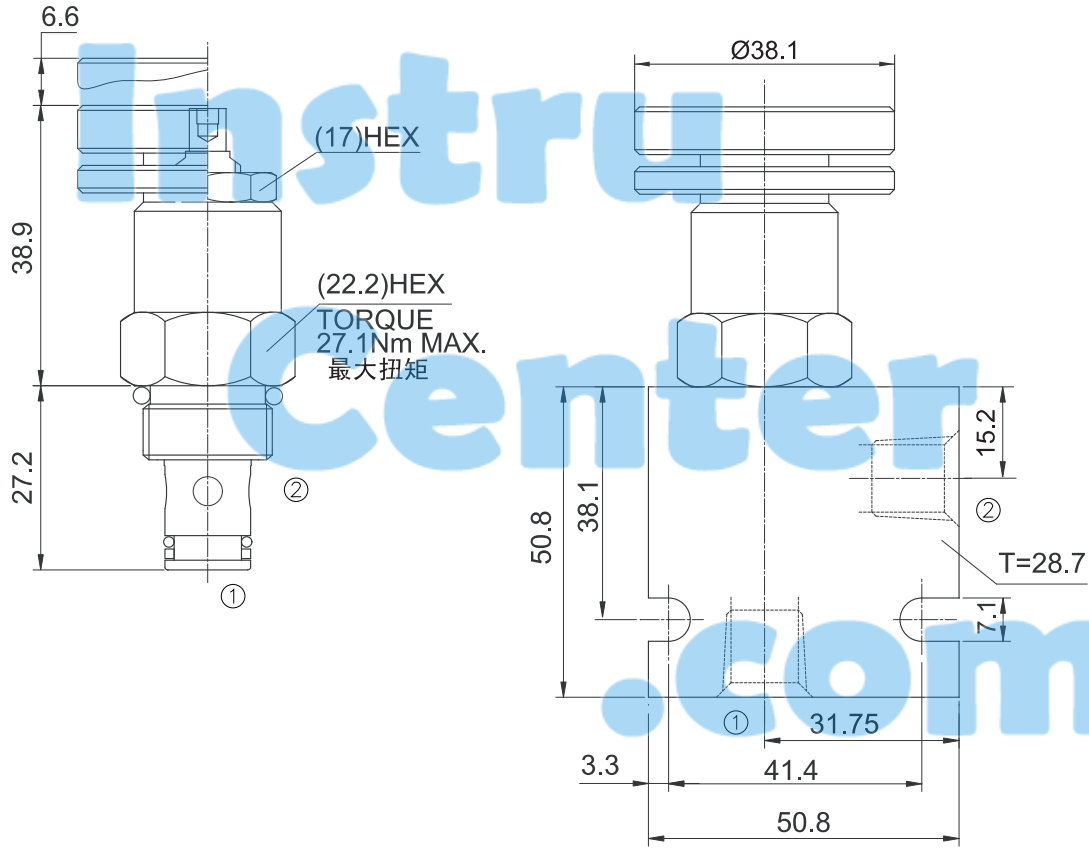


$$\text{FLOW IN GPM} = \frac{Cv \sqrt{P1 - P2}}{\sqrt{Gf}}$$

Cv = Flow Coefficient
 P1 = Inlet Pressure (psi)
 P2 = Outlet Pressure (psi)

Gf = specific gravity of medium at operating temperature in F.

INSTALLATION DIMENSIONS



Unit=Millimeters

TO ORDER

