



SERIES: P16

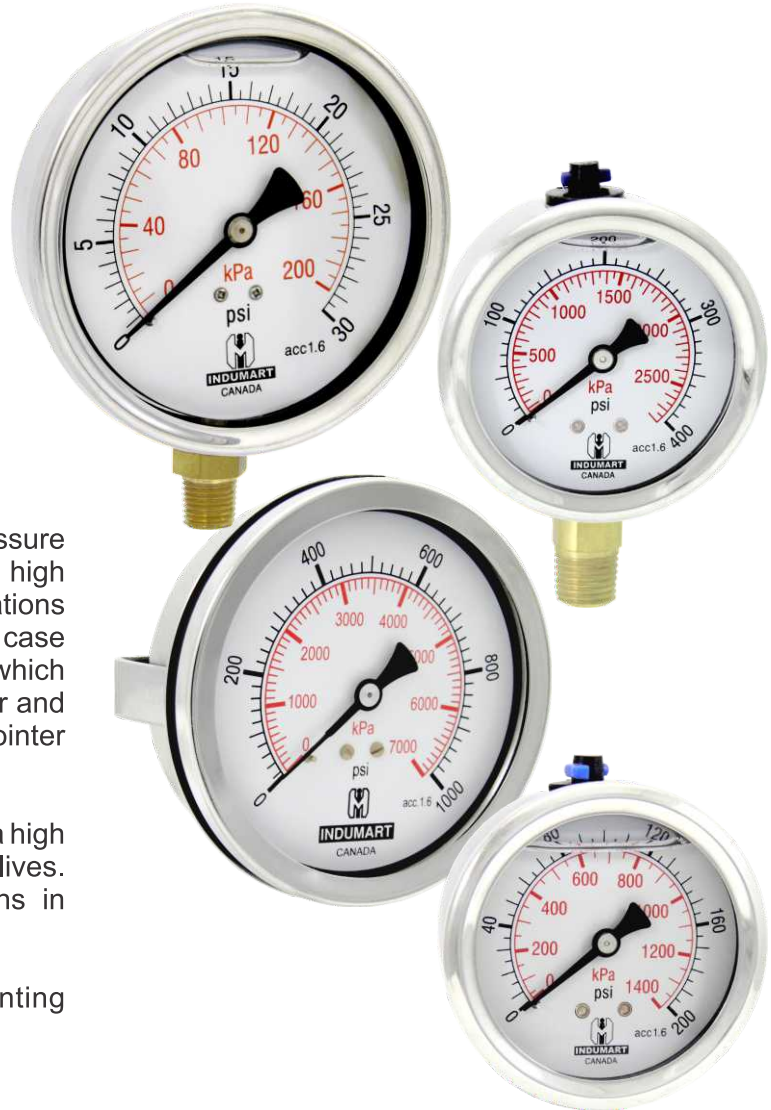
Dial: 1½", 2", 2½", 4"
Accuracy: 1.6%, 2.5%

DESCRIPTION

Indumart *P16 Series* Fillable Standard Pressure Gauges are used at measuring points with high dynamic alternating loads and strong vibrations and pulses. The glycerin filling of the case provides lubrication of the moving parts which protects the measuring system against wear and at the same time ensures smooth pointer movement and thus good readability.

Indumart *P16 Series* pressure gauges have a high level of functional safety and long service lives. These gauges are suitable for applications in hydraulics, compressors and pumps.

Various types of wall or panel mounting configurations are available.



SPECIFICATIONS

Accuracy	1.6% (2½" & 4" dials); 2.5% (1½" & 2" dials)
Dial Sizes	1½" (40 mm), 2" (50 mm), 2½" (63 mm), 4" (100 mm)
Case	St. steel
Bezel	St. steel; crimped bezel
Connection	Back or bottom
Thread	1/8" NPT (1½" dial only), 1/4" NPT (2", 2½", 4" dials) 1/2" NPT (option for 4" dial), BSP thread (option)
Window	Plexiglas
Bourdon Tube	Brass (std.), st. steel (option)
Max. Temperature	60°C
Range	0...10 to 0...15000 psi; 0...60 to 0...100000 kPa; 0...0.6 to 0...1000 bar Vacuum and compound ranges are available; see the Range Table*

* Maximum range for 1½" dial is 9000 psi (600 bar, 60000 kPa).

ORDER CODES

Model P16 -

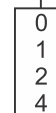
CONNECTION

Back
Bottom



DIAL SIZE

40 mm (1½")
50 mm (2")
63 mm (2½")
100 mm (4")



OPTIONS (more than one option may be selected)

Glycerine Filling
Silicon Filling
St. Steel Internal
1/2" Process Connection (100 mm dial only)
BSP Thread
Back Flange for Wall Mounting (not for 40 mm dial)
Front Flange for Panel Mounting (not for 40 mm dial)
Clamp with 2 Screws (63 mm dial only)



Example: P16T2-FG,IT

Specifications may change without prior notice.