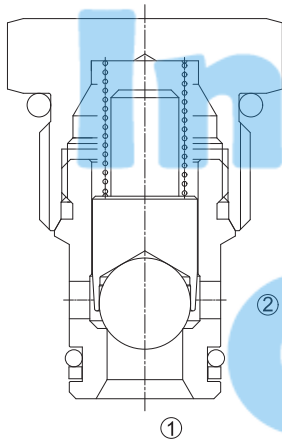


# LCV-10-B

## 单向阀 钢球型

Direct-Acting, Ball-Type  
Cartridge Check Valve



### OPERATION

Pressure at ① overcomes the spring-bias ball and allows free flow to ②.

Flow in the opposite direction, from ② to ①, is blocked by the ball.  
当在①口的压力超过开启压力,①到②开启; 在反方向,②到①关闭;

### FEATURES

#### 特性

- ball for positive shut-off.
- Low leakage.
- Industry common cavity.
- Compact size.

可迅速关闭的钢球。  
低泄漏。  
工业通用插孔。  
紧凑的结构。

### SPECIFICATIONS

#### 技术参数

**Operating Pressure(工作压力):** 250 Bar

**Flow(流量):** See PRESSURE DROP VS. FLOW graph.

**Internal Leakage(内泄漏):** 3 drops/min. max. at 250 Bar

**Crack Pressures(开启压力):**

0.34=0.34Bar

1.0=1.0Bar

2.1=2.1Bar

2.8=2.8Bar

4.8=4.8 Bar

6.9=6.9 Bar

13.6=13.6 Bar

20.4=20.4 Bar

**Temperature(温度):** -22°F to +250°F (-30°C to +120°C)

**Recommended Filtration:** Critical Application -ISO 16/12  
(推荐的过滤网) Non-Critical Application-ISO 19/15

**Fluids(流体):** Mineral-based fluids.

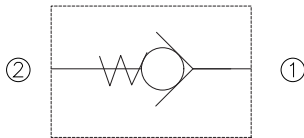
For other fluid compatibility, consult factory.

**Cavity(插孔):** 10-2, see page 403

**Body Material(阀块材料):** Anodized 6061T6 aluminum alloy rated at 207 Bar.

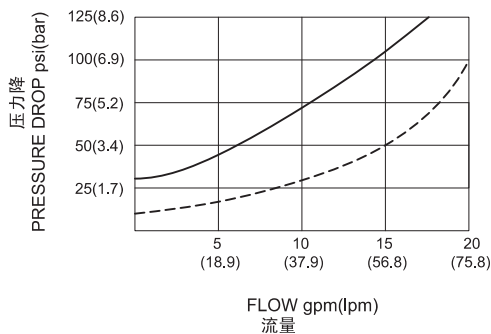
6061-T6铝, 允许使用最大压力207Bar.

### SYMBOL

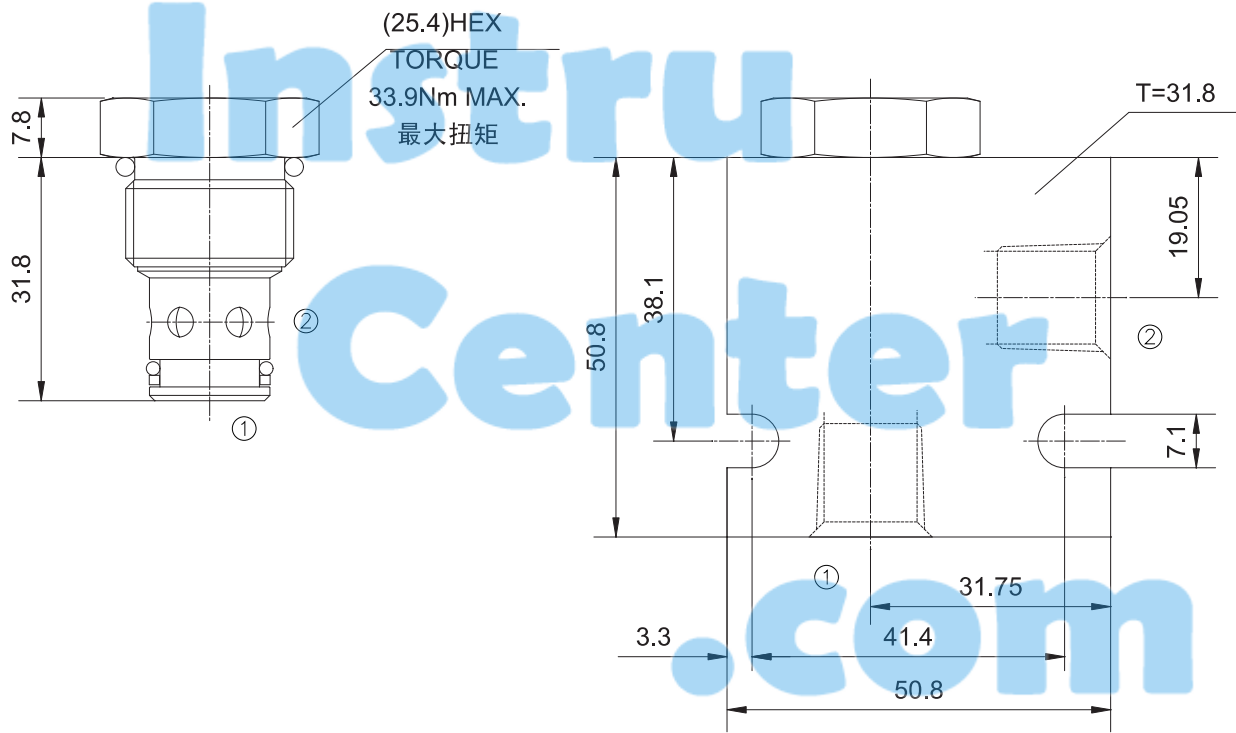


### PRESSURE DROP VS. FLOW

with 2.1 bar/30 psi spring ———;   
with 0.34 bar/5 psi spring - - - - -;   
150 ssu/32 cSt OIL@100°F/38°C



INSTALLATION DIMENSIONS



Unit=Millimeters

TO ORDER

