

ILCV2000-G14

管式单向阀

Direct-Acting, Poppet-Type Check Valve In-line

OPERATION

When pressure at ① rises above the spring bias pressure, the poppet is lifted and flow allowed from ① to ②.

The valve is closed (checked) from ② to ①.

当在 ① 口的压力超过开启压力，① 到 ② 开启；

反方向，② 到 ① 关闭；

FEATURES

特性

- Hardened poppet and seat for long life.
- Low leakage.
- Compact size.

长寿命的阀。
低泄漏。
紧凑的结构。

SPECIFICATIONS

技术参数

Max. Pressure(最大压力): 350Bar

Flow(流量): See PRESSURE DROP VS.FLOW graph..

Internal Leakage(内泄漏): 3 drops/min

Crack Pressures(开启压力): <0.5 bar

Temperature(温度): -22°F to +250°F(-30°C to +120°C)

Fluids(流体): Mineral-based fluids.

For other fluid compatibility, consult factory.

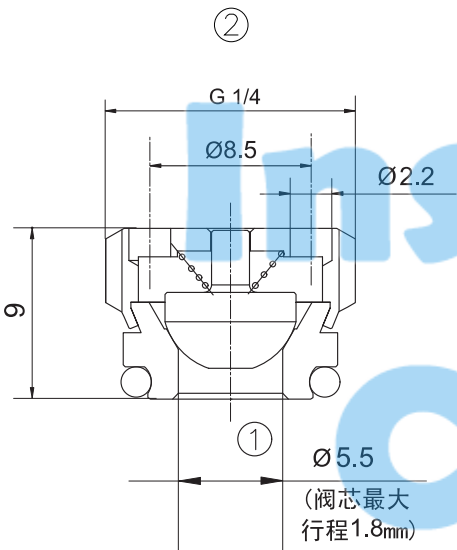
Body Material(阀块材料): Anodized 6061T6 aluminum

alloy rated at 207 bar

6061-T6, 允许使用最大压力207 bar;

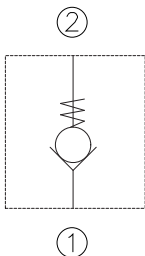
Steel rated at 350 bar.

钢材允许使用最大压力350 bar。



安装扭矩:6Nm MAX.

SYMBOL



PRESSURE DROP VS. FLOW

