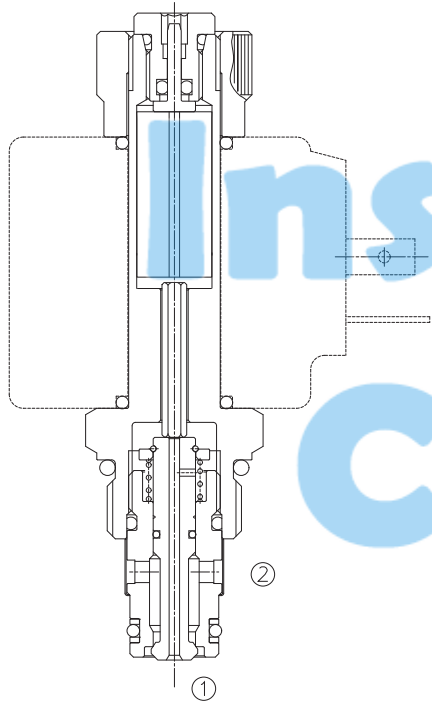


LSV2 -08-2 NC SP-L

二位二通电磁阀 双向止回型

Normally-Closed, Two-Way, Two-Position, Bi-Directional Cartridge Solenoid Valve



OPERATION

When de-energized, the valve blocks flow in both directions.

When energized, the poppet shifts to allow flow in either direction.

断电时，此阀截止油液双向流动；

通电后，阀芯打开，允许油液从②流向① 或从①流向②流动。

Operation of Manual Override Option: To override, push button in to activate. To return to normal valve function, release button.

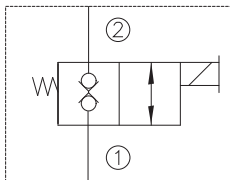
推进按钮，两油口互通；释放按钮，返回到常态。

FEATURES

特性

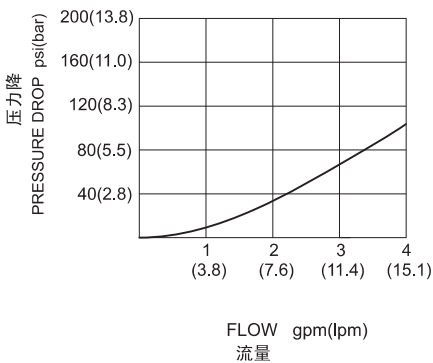
- Continuous-duty solenoid. 可持续工作的电磁铁。
- Hardened poppet and seat for long life. 长寿命的阀芯和阀套。
- Efficient wet-armature construction. 高效能的电磁铁结构。
- Optional coil voltages and terminations. 可选择的线圈电压和终端。
- Manual override option. 可带手动卸荷。
- Industry common cavity. 工业通用插孔。
- Compact size. 紧凑的结构。

SYMBOL



PRESSURE DROP VS. FLOW

② to ① and ① to ② energized 通电
150 ssu/32 cSt oil @ 100°F/38°C



SPECIFICATIONS

技术参数

Operating Pressure (工作压力) : 207 Bar

Flow (流量) : See PRESSURE DROP VS. FLOW graph.

Internal Leakage (内泄漏) : <1 drops/min.

Our ideal leakage: <0.05drops/min

Temperature(温度) : -22°F to +250°F (-30°C to +120°C)

Coil Rating (线圈电压范围) :

Continuous from 90% to 110% of rated voltage.

Recommended Filtration: Critical Application – ISO 16/12

(推荐的过滤网) Non-Critical Application – ISO 19/15

Fluids (流体) : Mineral-based fluids.

For other fluid compatibility, consult factory.

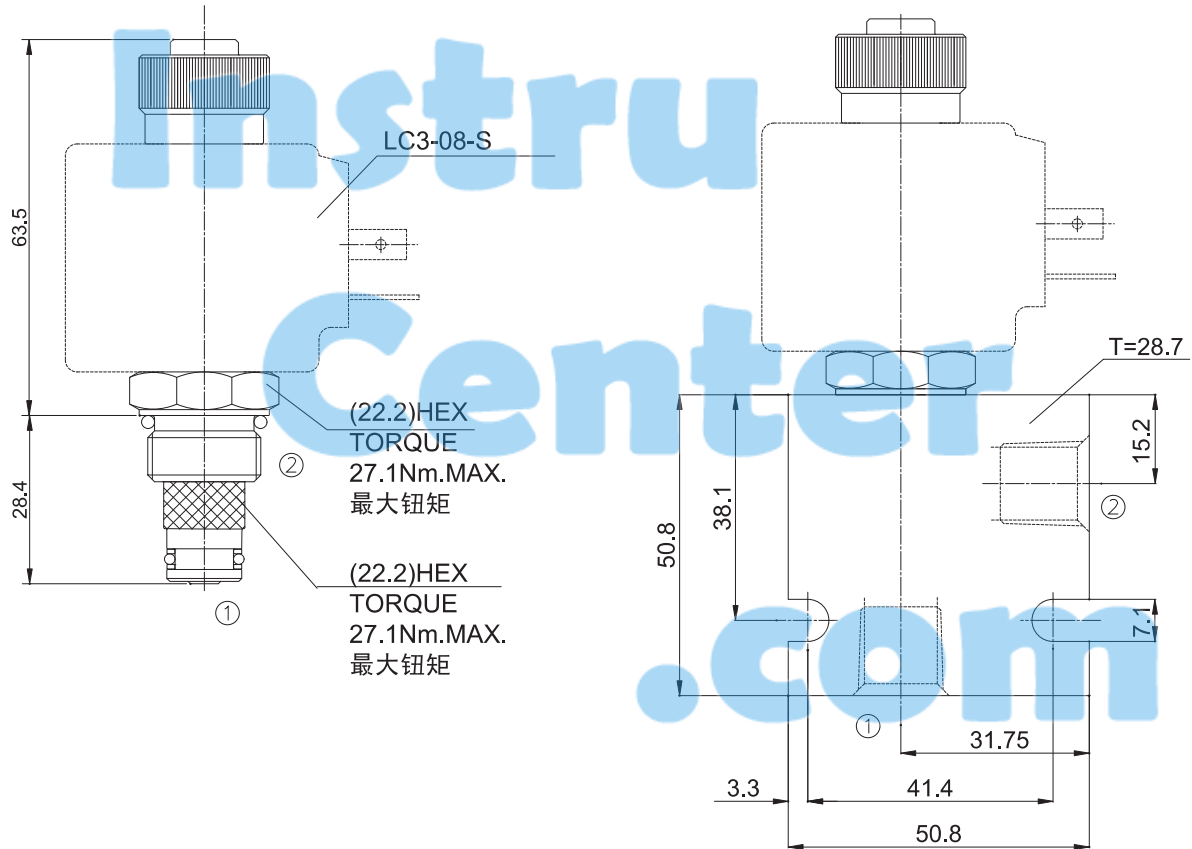
Cavity (插孔) : 08-2, see page 402

Body Material (阀块材料) : Anodized 6061T6 aluminum alloy rated at 207 Bar.

6061-T6铝，允许使用最大压力207Bar.

INSTALLATION DIMENSIONS

COIL MUST BE INSTALLED WITH LETTER UP
安装线圈时, 字母必须朝上



Unit=Millimeters

TO ORDER

LSV2- 08 - 2 NC SP - L* - ** - **		
SOLENOID VALVE	电磁阀	电磁阀
CAVITY	插孔	插孔
FLOW PATH	流道类型	流道类型
NORMALLY CLOSED	常闭	常闭
POPPET	锥阀型	锥阀型
L=Zero Leak Option	零泄漏	零泄漏
M=Manual Override (Omit for standard)	手动卸荷 (省略为常规)	手动卸荷 (省略为常规)
		BODY PORTING 阀块 4T=SAE4 6T=SAE6 2G=G 1/4 3G=G 3/8 Other Porting is Availa 其它螺纹油口也是可选 (Omit for Cartridge onl 省略为不带阀块)
		COIL CONNECTION 线圈连接 D= Double Lead 双线 H= Hirschmann 三插 ER= Deutsch Connector (Water-proof Coil) 德意志插座 (防水线圈)
		VOLTAGE 电压 1=12V Volt DC 2=24V Volt DC 3=110V Volt AC 4=220V Volt AC