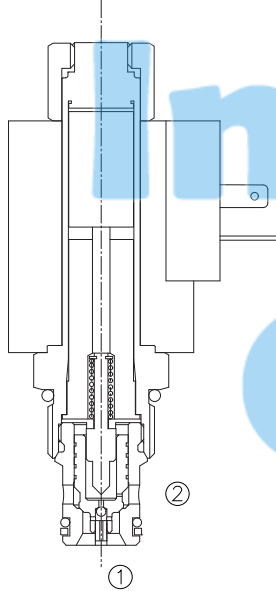


## LSV2-10-2 NORP

### 二位二通电磁阀 常开 锥阀型



## Normally-Open, Two-Way, Two-Position, Poppet Type Cartridge Solenoid Valve With Reverse Flow De-energized

### OPERATION

When de-energized, the poppet lifts to open flow both ② and ① ;  
When energized, the cartridge acts as a check valve, allowing flow from ① to ② after overcoming the solenoid force (requires 3.4 to 10.3 bar [50 to 150 psi]).  
while blocking flow from ② to ①.

当电磁铁不通电时，从②口到①口双向通；

当电磁铁通电时，②口到①口不通，当①口压力超过电磁铁力，①口到②口方向打开。

**Operation of Manual Override Option:** To override, push button in to activate. To return to normal valve function, release button.

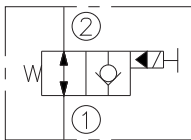
推进按钮，②到①关闭；释放按钮，返回到常态。

### FEATURES

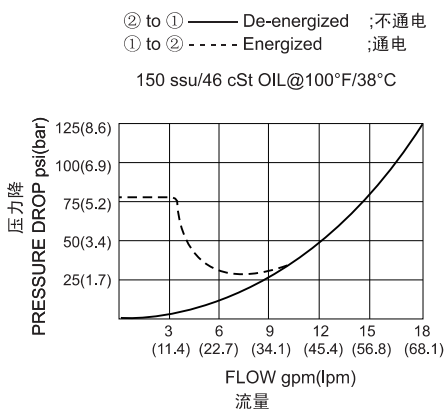
#### 特性

- Continuous-duty solenoid. 可持续工作的电磁铁。
- Hardened seat for long life . 长寿命的阀。
- Optional coil voltages and terminations. 可选择的线圈电压和终端。
- Efficient wet-armature construction. 高效能的电磁铁结构。
- Filter screen standard. 标准的过滤网。
- Industry common cavity. 工业通用插孔。
- Compact size. 紧凑的结构。

### SYMBOL



### PRESSURE DROP VS. FLOW



### SPECIFICATIONS

#### 技术参数

**Max. Operating Pressure** (最大工作压力) : 250Bar

**Flow** (流量) : See PRESSURE DROP VS. FLOW graph.

**Internal Leakage** (内泄漏) : 3 drops/minute max. at 250Bar .

**Temperature**(温度) : -22°F to +250°F (-30°C to +120°C)

**Coil Rating** (线圈电压范围) : Continuous from 90% to 110% of nominal voltage.

**Recommended Filtration:** Critical Application-ISO 16/12

(推荐的过滤网) Non-Critical Application-ISO 19/15

**Fluids** (流体) : Mineral-based fluids.

For other fluid compatibility consult factory.

**Cavity** (插孔) : 10-2, See page 403

**Body Material** (阀块材料) : Anodized 6061T6 aluminum

alloy rated at 207 Bar.

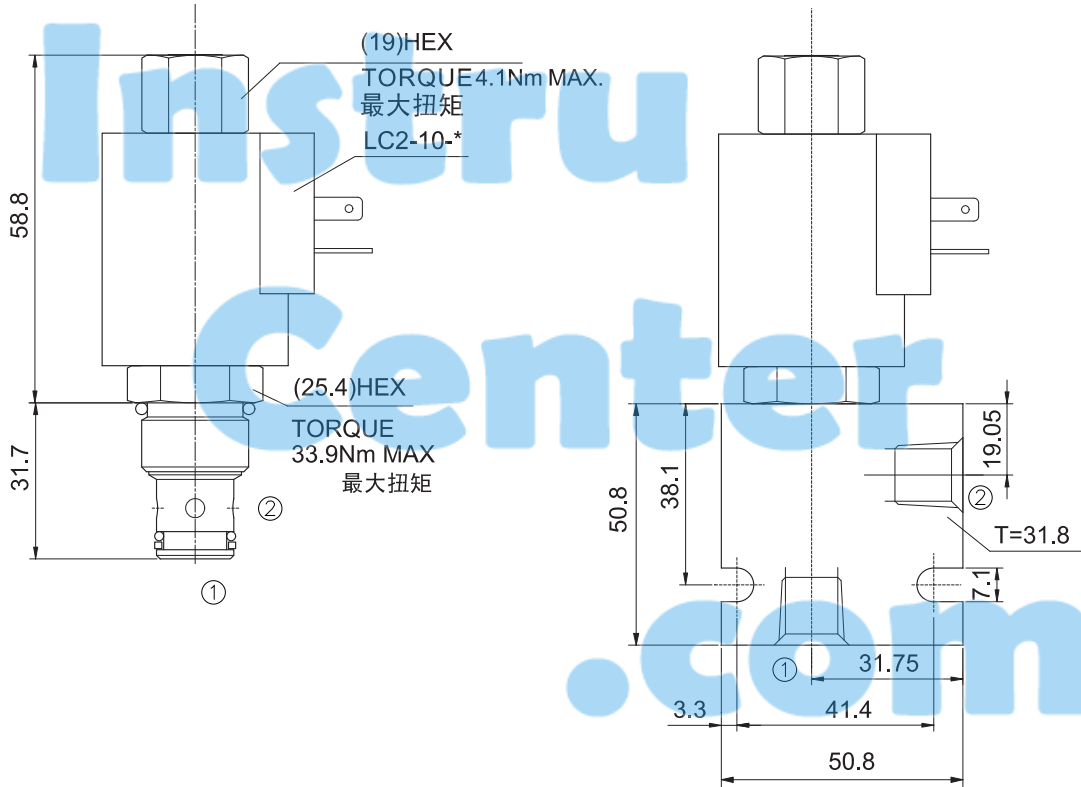
6061-T6, 允许使用最大压力207Bar.

Steel rated at 350 Bar.

钢材允许使用最大压力350Bar.

**INSTALLATION DIMENSIONS**

COIL MUST BE INSTALLED WITH LETTER UP  
 安装线圈时, 字母必须朝上



Unit=Millimeters

**TO ORDER**

**LSV2 - 10 - 2 NO RP - \* - \*\* - \*\***

