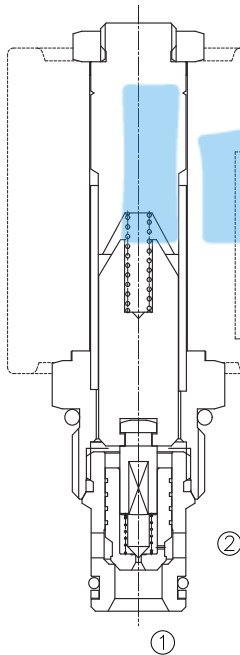


LSV2-10-2 NCP

二位二通电磁阀常闭，锥阀型

Normally-Closed, Two-Way, Two-Position, Pilot-Operated Cartridge Solenoid Valve



OPERATION

When de-energized, the valve acts as a check valve, allowing flow from ① to ②, while blocking flow from ② to ①.

When energized, the poppet lifts to open the ② to ① flow path.

当电磁铁不通电时，①到②相当于单向阀，②到①关闭；

当电磁铁通电时，②到①开启。

Operation of Manual Override Option: To override, push button in, twist counterclockwise and release. In this position, valve will remain open in a detented condition.

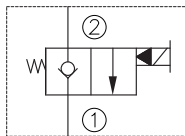
To return to normal operation, push button in, twist clockwise and release. Override will be detented in this position.

先推进按钮，然后逆时针方向旋转，释放。此时阀口打开；

返回到常态，推进按钮，然后顺时针方向旋转，释放。

旋钮将被固定在这位置。

SYMBOL



FEATURES

特性

- Continuous-duty solenoid. 可持续工作的电磁铁。
- Hardened poppet and plunger for long life. 长寿命的阀。
- Efficient wet-armature construction. 高效能的电磁铁结构。
- Optional coil voltages and terminations. 可选择的线圈电压和终端。
- Filter screen standard. 标准的过滤网。
- Industry common cavity. 工业通用插孔。
- Compact size. 紧凑的结构。

SPECIFICATIONS

技术参数

Max. Operating Pressure (最大工作压力) : 250Bar

Flow (流量) : See PRESSURE DROP VS. FLOW graph.

Internal Leakage (内泄漏) : 3 drops/min. max. at 250Bar.

Temperature(温度) : -22°F to +250°F (-30°C to +120°C)

Coil Rating (线圈电压范围) : Continuous from 90% to 110% of rated voltage.

Recommended Filtration: Critical Application-ISO 16/12

(推荐的过滤网) Non-Critical Application-ISO 19/15

Fluids (流体) : Mineral-based fluids.

For other fluid compatibility consult factory.

Cavity (插孔) : 10-2, see page 403

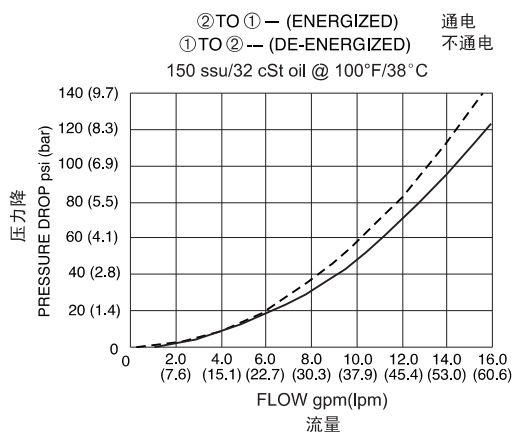
Body Material (阀块材料) : Anodized 6061T6 aluminum alloy rated at 207 Bar.

6061-T6铝，允许使用最大压力207Bar.

Steel rated at 350 Bar.

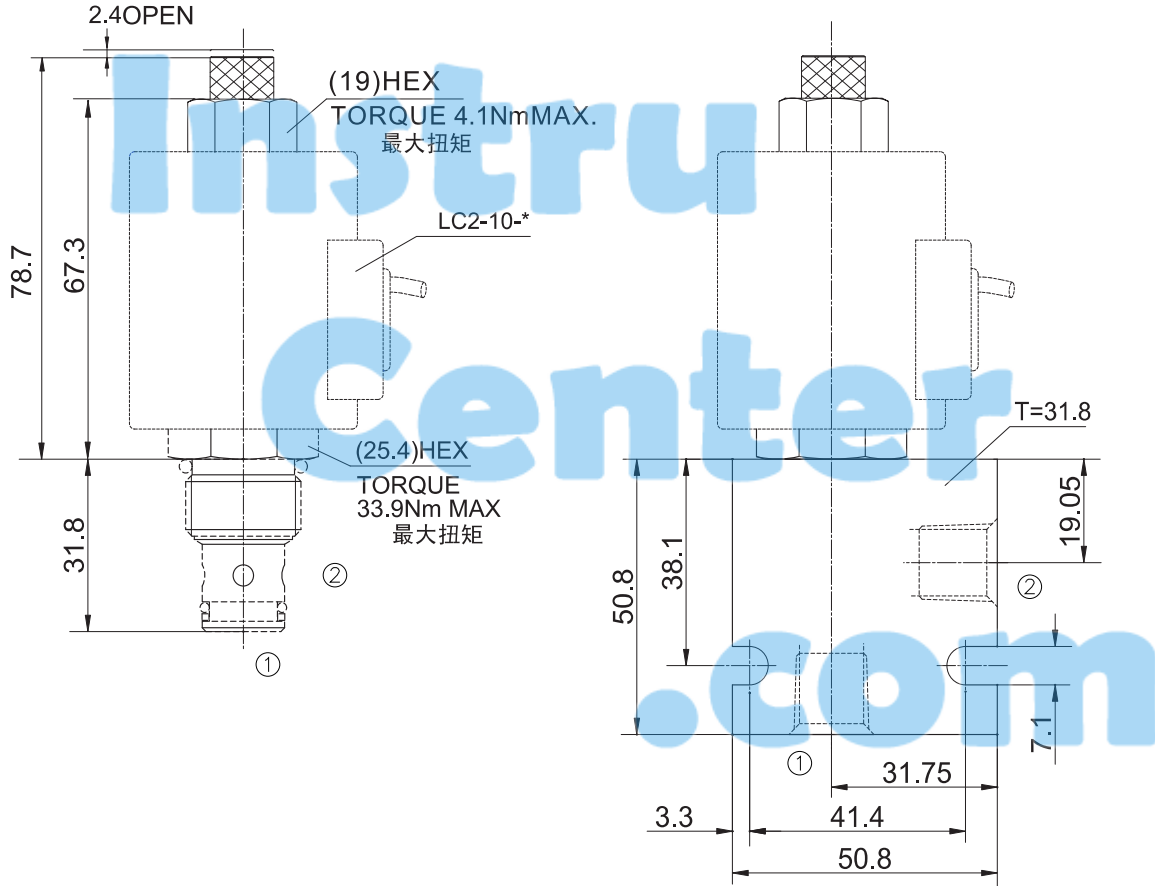
钢材允许使用最大压力350Bar.

PRESSURE DROP VS. FLOW



INSTALLATION DIMENSIONS

COIL MUST BE INSTALLED WITH LETTER UP
 安装线圈时, 字母必须朝上



Unit=Millimeters

TO ORDER

