

9873 160x120 Thermal Imager is basic one only with full IR, 9875/9877 160x120 High Performance Thermal Imager is easy to help you to find the potential problems with innovation features and functionality, you can perform infrared inspections faster and more efficiently and thoroughly document problem areas for additional following:

Key features

- 160x120 High Performance Thermal Imager with high resolution TFT color LCD display
- Professional IR-optical focus system ensures that images are in good focus for optimum image clarity and scanning convenience.
- Capture additional measurements fast and conveniently with wireless modules (9877 only)
- Meterbox analysis system—quickly identify and keep track of inspection locations by adding digital images of important information and surrounding areas
- Find problems faster and easier with accurately identify potential issues by combining digital and IR images
- Picture in Picture function Displays thermal image super-imposed over a digital image
- LED Flashlight allows the visual camera and fusion to be used in poorly lit environments
- Wide Temperature Range from -20° to +400°C targeting electrical and industrial applications
- ±2% Accuracy for reliable temperature measurement
- The image rotation has the ability to automatically rotate the active image
- Audio recorded with the video image acts a speaker to listen to audio recorded with the video image
- Capacitive touch screen is easier, productive and effective to operate it
- Lithium polymer Rechargeable Battery lasts >4hrs continuous use; replaceable
- An easy-to-access thumbnail image gallery helps you to quickly review and find your thermal images.
- Area (Min/Max) Mode shows the Minimum or the Maximum Temperature reading in the selected area
- A conveniently located button activates the laser pointer that will help you associate the hot or cold spot in the thermal image with the real physical target in the field.
- In order to adapt the device to every situation both wide angle and tele-lenses are available.
- Equipped with standard video, USB outputs as well as a removable SD card.
- The IR video can be streamed to a PC via USB or wifi (DT-9877 only).



Model: 9875/9877

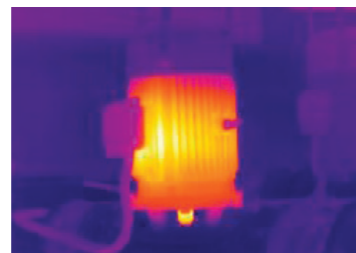
Wi-Fi Connectivity/
Bluetooth Communication



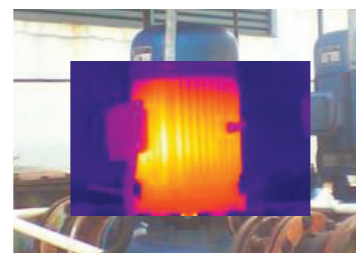
Model: 9873



EMC
EN: 61326-1
EN: 61010-1



Full Infrared



Picture-in-Picture



Color Alarm



Full visible light

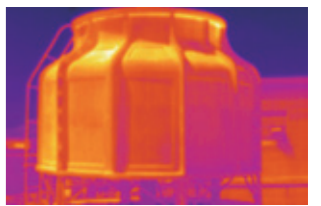


33mm Lens RL-33 22mm Lens RL-22



Size(HxWxD): 243mm x 103mm x 160mm **Weight:** 920g
Accessories: Hard transport case, 7.5mm lens, Sun Visor, Tripod base, AC charger/Power supply, Earphone, Battery, Camera lens cap, software CD-ROM, Handstrap, micro SD card, USB cable & RCA cable, Gift box.

| Specifications | | 9873 | 9875 | 9877 |
|---|--|------|------|------|
| Imaging and optical data | | | | |
| IR resolution | 160x120pixels, focal plane array (FPA), uncooled microbolometer | * | * | * |
| Field of View (FOV) | 29.8° × 22.6° | * | * | * |
| Minimum focus distance | 0.2m (0.66ft.) | * | * | * |
| Spatial resolution (IFOV) | 3.33 mrad | * | * | * |
| Thermal sensitivity/NETD | < 0.08°C @ +30°C (+86°F) / 80 mK | * | * | * |
| Image frequency | 50Hz | * | * | * |
| Focus | Manual | * | * | * |
| Zoom | 1-20x continuous, digital zoom | * | * | * |
| Rotate | 0-360°, continuous change by 1° | * | * | * |
| Image presentation | | | | |
| Display | 3.5" TFT, capacitive touch screen | * | * | * |
| Image modes | IR image, visual image, picture in picture | * | * | * |
| Picture in Picture | IR area on visual image or visual image area on IR | * | * | * |
| Color palettes | GRAY/GRAY IRON/IRON/RAINBOW/FEATHER | * | * | * |
| Measurement | | | | |
| Object temperature range | Low range: -20°C to +150°C (-4°F to +302°F) High range: 0°C to +400°C (+32°F to +752°F) | * | * | * |
| Accuracy | ±2°C (±3.6°F) or ±2% of reading | * | * | * |
| Measurement analysis | | | | |
| Spotmeter | 3 | * | * | * |
| Emissivity adjustable | 0.01~1.0 Adjustable | * | * | * |
| Emissivity table | Emissivity table of predefined materials | * | * | * |
| Line | 2 lines(horizontal and vertical) | * | * | * |
| Area | 3 boxes with max. /min. /average | * | * | * |
| Automatic hot /cold detection | Auto hot or cold spotmeter marks | * | * | * |
| Isotherm | Detect high/low temperature/interval | * | * | * |
| Measurement corrections | Emissivity, ambient temperature, distance, relative humidity, offset temperature | * | * | * |
| Set-up | | | | |
| Laser / floodlight | < class2 / white LED floodlight | * | * | * |
| Set-up commands | Local adaptation of units, language, date and time formats, information of camera | * | * | * |
| Language selection | English, Chinese, French, German, Spanish | * | * | * |
| Storage of videos | | | | |
| Storage media | 4Gbytes Micro SD card | * | * | * |
| Video storage format | Standard MPEG-4, 640x480@30fps, on memory card > 60 minutes | * | * | * |
| Video storage mode | IR/visual images; simultaneous storage of IR and visual images | * | * | * |
| Storage of images | | | | |
| Image storage format | Standard JPEG, including measurement data, on memory card > 1000 pictures | * | * | * |
| Image storage mode | IR/visual images; simultaneous storage of IR and visual images | * | * | * |
| Digital camera | | | | |
| Built-in visible light digital camera | 640x480 Pixels | * | * | * |
| Data communication interfaces | | | | |
| USB interfaces | USB-mini, data transform between camera and PC remote control, live video | * | * | * |
| Wi-Fi connectivity | Wi-Fi connectivity allows to send images and data to mobile devices remote control, live video | * | * | * |
| Video out | Composite(PAL and NTSC) | * | * | * |
| Power system | | | | |
| Battery | Lithium polymer battery, 4 hours operating time | * | * | * |
| Input voltage | DC 9V to 12V | * | * | * |
| Charging system | In camera (AC adapter) | * | * | * |
| Power management | Automatic shutdown and sleep mode (user selectable) | * | * | * |
| Environmental data | | | | |
| Operating temp range | -20°C to +50°C (-4°F to +122°F) | * | * | * |
| Storage temp range | -40°C to +70°C (-40°F to +158°F) | * | * | * |
| Relative humidity (operating and storage) | 10%RH-90%RH | * | * | * |
| Encapsulation | IP65 | * | * | * |
| Drop test | 2m | * | * | * |
| Bump | 25g(IEC60068-2-29) | * | * | * |
| Vibration | 2g(IEC60068-2-6) | * | * | * |



Applications

- Plant/General Maintenance
- HVAC/R
- Transportation/Automotive
- Cooling and Reheating
- Serving areas
- Food service Equipment
- Cold storage