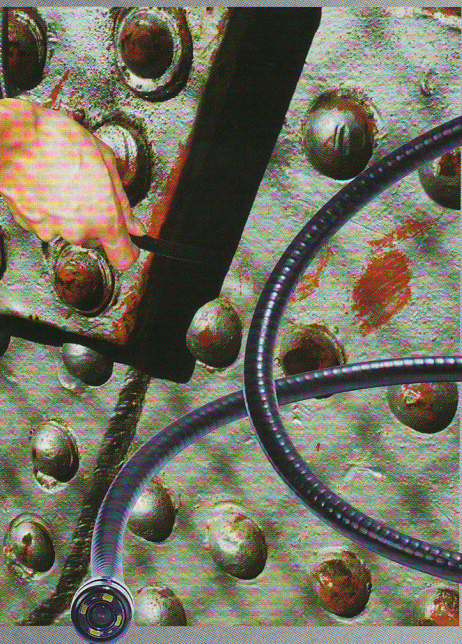




High definition 3.5" Color TFT LCD, supporting photo/video, time/date display and multi-languages. Video and images can also be transferred to your PC via the SD Card or USB cable (included). Modern design housing with waterproof (IP67) flexible gooseneck retains configured shape.



EMC
EN: 61326



- 3.5" Color TFT-LCD**
- Flexible gooseneck-imager head with waterproof and Easily perform visual inspections in hard to reach areas
- Camera and Video function
- Compatible with TV(TV-OUT)
- Allows user to view image on LCD monitor
- High visibility and 10 degree adjustable LED lighting
- Rechargeable battery with USB cable Support SD memory card extension
- EN FR GE ES** Menu with multinational language

Specifications

LCD screen type	3.5" TFT
LCD Pixels	320x240
The max number of frames(FPS)	30FPS/S
Picture format from the camera	JPG(1280x1024/640x480/1024x768)
Camera video format	MP4/AVI (640x480)
Gooseneck length	1m(39")
Camera diameter	17mm(0.66")
Viewing distance	5cm to 15cm
Viewing angle	68°
Zoom and Rotation	3xZoom, 5°/15°/30°/90° rotation
SD card	2GB/Max 32GB
Working voltage	Li Battery 3.7V/1800mA
TV-OUT	PAL/NTSC system
Language	Support English, French, German, Spanish



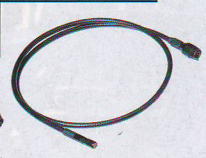
BT-17
Φ17mm Camera Probe



BT-6
Φ6mm Camera Probe



YC-17
Φ17mm Extension Cable
(1-3 meter optional)



BT-9
Φ9mm Camera Probe

Size(HxWxD): 240mm x 160mm x 100mm
Weight: 584g
Accessories:
 3.7V Li battery, power adaptor, mirror, hook, magnet, gift box with carrying case.

Accessories:

 Mirror, Hook & Magnet