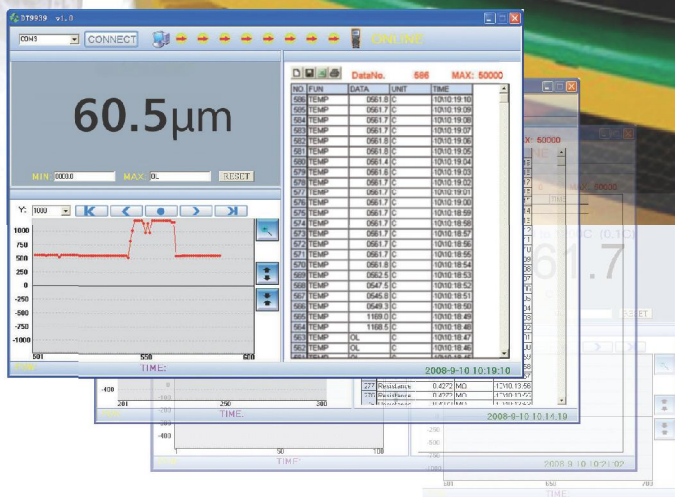


# St

## Coating Thickness Tester



ST-157

Coating Thickness Tester

St

Dual Technology Features Automatic Selection of Magnetic Induction or Eddy Current Measurement Techniques. The measuring data is easily transferred to PC for edit and storage.

Features

- Non-magnetic coatings(e.g. paint, zinc)on steel
- Insulating coatings(e.g. paint)on no-ferrous metals
- No-ferrous metals coatings on insulating substrates
- Menu operation system
- Two measuring mode: CONTINUE and SINGLE mode
- Two working Mode: DIRECT and GROUP mode
- Statistic Display: AVG, MAX, MIN, NO., S.DEV
- One point calibration, two points calibration and basic calibration easily
- Memory for 2500 readings( 50 GROUP readings)
- Delete single readings and all group readings easily
- High alarm and Low alarm for all working modes
- 4 levels of battery indication
- Error indication
- Bluetooth interface
- Easily adapt to lighting conditions with 8 levels of backlight

Specifications

Sensor probe	F	N
Working principle	magnetic induction	Eddy current principle
Measuring range	0~2000um	0~2000um
Guaranteed tolerance (of reading)	(+/- 2%+2)um	(+/- 2%+2)um
Low range Precision	0.1um	0.1um
Minimum curvature radius	1.5mm	3mm
Diameter of Minimum area	7mm	5mm
Basic critical thickness	0.5mm	0.3mm



EMC  
EN: 61326



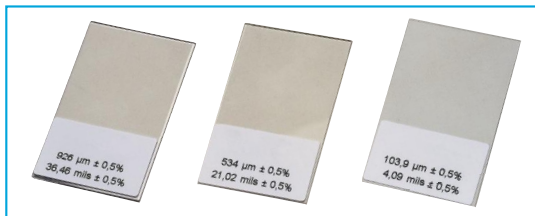
Model 157



Calibration Iron



Calibration Aluminum



Precision Standard

**Size(HxWxD):** 113.5mm x 54mm x 27mm  
**Weight:** 110g

Accessories:

Two "AAA" batteries, CD, Calibration Iron, Calibration Aluminum, Precision Standard, gift box with carrying case.

