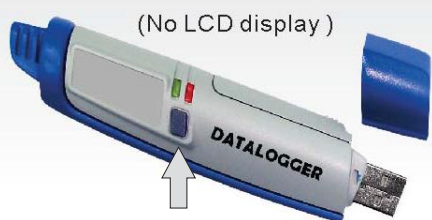


MINI USB DATALOGGER TEMP.RH SERIES

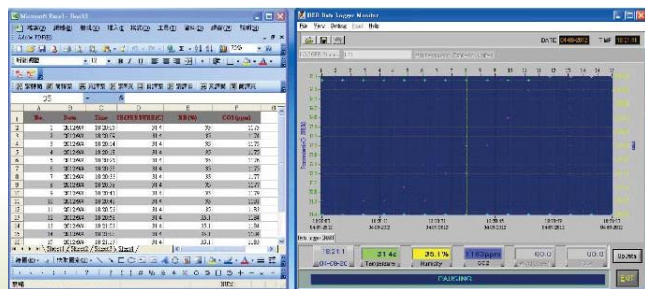


(No LCD display)

Special flat key design prevent fail in carefulness touch to start or stop recording



Optional tripod



Stand alone datalogging

Spec./ Model no.	98580	98581
Record data	Temperature	
LCD display	YES (985805 No display)	YES (985815 No display)
Sample interval	From 1 second up to 6 hours	
Temp.range	-40.0~85.0°C(-40~185°F)	
Accuracy	±0.6°C(-20~50°C),others±1.2°C	
Memory capacity- Total	16000	32000
Operating Temp.RH%	0~50°C(32~122°F), <80%RH	
Logger size	135.7 x 28.5 (with cap) mm	

FEATURES :

- Design patented mini USB Temp.RH% datalogger with smart and modern shape
- Cost effective without additional costly logger cradle or logger interface device
- Dew point, Wet bulb temperature, Heat Index , WBGT temperature reserved from updated software (Coming soon)
- Special key start design prevent easy-touch button starting or stopping recording.
- Bright LED (Green and Red) stands for logging or data exceeds threshold setting
- Visible LCD models :Easy to check the readings in time and any time
- Two color trim looks modern and smart
- When battery is weak, plug USB cable with PC for keeping recording
- Tripod receptacle and strip hole design for long time logging purposes
- Easy plug the logger onto PC to set up and upload stored data
- Record parameters are selectable (Temperature / RH% , both or either)
- Memory point is selectable from 1,000 points up to 32,000 points
- Five (5) start to record modes:
 - 1.) Schedule
 - 2.) Immediate
 - 3.) Key start
 - 4.) Real time (Up to 64,000 points)
 - 5.) Rollover
- User friendly datalogger software performs more function than any other logger software in the market

Supplied with :

- Logger x1, Battery 1/2AA x1 , Manual x1 , CD x1 (Software), Sensor protective cap x1 ,Clear USB cap x 1 , Wrist strip x 1

	98582	98583
LCD display	YES (985825 No display)	YES (985835 No display)
Sample interval	From 1 second to 6 hours	
Temp.range	-40.0~85.0°C	
Resolution	0.1°C/0.1°F	
Accuracy	±0.6°C(-20~50°C),others±1.2°C	
RH % range	0.1%RH~99.9%RH	
Resolution	0.1%RH	
accuracy	±3%RH(at 25°C, 10~90%RH,others ±5%RH)	
Memory capacity- Total	16000	32000
Power	1/2 AA battery x 1	
Operating Temp. RH	0~50°C, <80%RH	
Logger size	135.7 x 28.5 (with cap) mm	