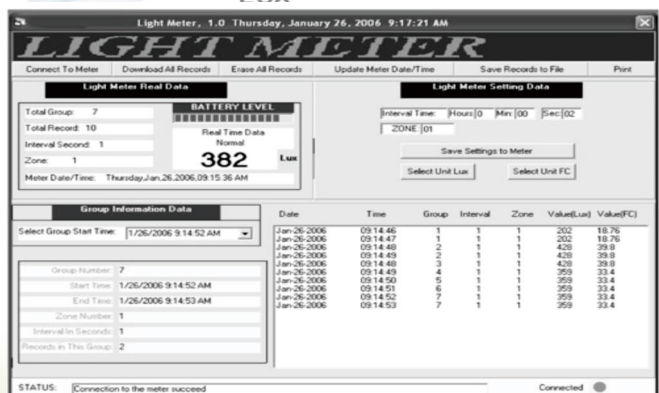


LUX METER



(98203)

Illuminance	Surfaces illuminated by:
0.002 lux	Moonless clear night sky with airglow
0.27–1.0 lux	Full moon on a clear night
3.4 lux	Dark limit of civil twilight under a clear sky
50 lux	Family living room lights (Australia, 1998)
80 lux	Office building hallway/toilet lighting
100 lux	Very dark overcast day
320–500 lux	Office lighting
400 lux	Sunrise or sunset on a clear day.
1,000 lux	Overcast day typical TV studio lighting
10,000–25,000 lux	Full daylight (not direct sun)
32,000–130,000	Direct sunlight

FEATURES :

- 3-1/2 digits LCD with maximum reading 2000
- Convenient one-hand operation, press hold to freeze readings
- Overload indication or Low battery indication
- According to JISC1609:1993 and CNS 5119 general A class specifications
- Data hold function freezes readings ensure correct light intensities
- Protective cap ensure zero calibration completed
- Spectral response closed to CIE luminous spectral efficiency
- Measure intensities of illumination in unit of Lux of Foot-Candle
- Silicon angular corrected
- USB interface, 7000 points recording for model 98203, a very smart software as left page functioning :
Download data , Erase data , Update meter date and time, Save file and print data ,shows real time data, Lux/FC status, HOLD, REC, Max/Min status, total group, total records in memory, interval, date and time, status message...

- Auto ranging for model 98203.98205, manual ranging for model 98204

Supplied with :

- Meter x1 , Batteries x1 , manual x 1 , plain paper box 1 or optional pouch

Specifications:	98203	98204	98205
Average	YES	N/A	N/A
Max/ Min hold	YES	YES(Only Max.)	YES
Zero adjustment	YES	YES(At right side)	YES
Auto ranging	YES	N/A (Manual ranging)	YES
Auto power off	YES	N/A	YES
Datalogger	YES (Record 7000 points)	N/A	N/A
Sensor	Silicon diode and filter		
Measuring range	20, 200, 2000, 20000, 200000 Lux 20, 200, 2000, 20000, 200000 Foot-candle		
Accuracy	±3% (Calibrated to standard incandescent lamp 2856 K) ±6% (other visible light source)		
Angle deviation from cosine characteristics	30° ±2%	60° ±6%	80° ±25%
Weight (battery included)	Approx. 250 g		
Dimension	200 x 55 x 38mm (Incl. top light sensor)		