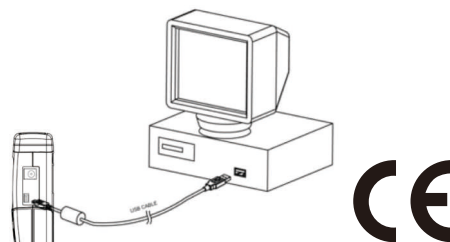
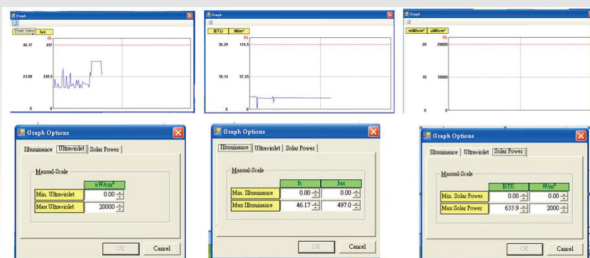


SOLAR POWER / UVA /LUX METER



98208



Three (3) in one Solar power / UVA / Light
USB interface, store up to 45,000 points data

Specifications:	98208 Three in one datalogger
Display	3-3/4 digits. Max.3999
Range-SOLAR POWER	40W/m ² , 400W/m ² . 2000W/m ² , 13,127,634Btu/ft ²
-LUX	40,400,4000,40000,400000 Lux 40,400,4000,40000 Foot Candle
-UVA	40,400,4000 uW/cm ² , 20mW/cm ²
Resolution-SOLAR POWER	0.01,0.1,1W/m ² 0.01,0.1.1 Btu/ft ² * h
-LUX	0.01,0.1,1.10,100 Lux 0.01,0.1,1,10 Foot Candle
-UVA	0.01uW/cm ² , 1uW/cm ² 0.01mW/cm ²
Accuracy- SOLAR POWER	+5%
-LUX	+3% (Calibrated to standard incandescent lamp 2856K)
-UVA	+6% (Other visible light source)
Wavelength	Solar Power-40~1100nm, Lux 320~390nm, UVA 320~400nm
Datalogging capacity	45000 records
Dataoutput	USB PC serial interface
Dimension	Meter: 159x55x38mm.

FEATURES :

98206 Solar power meter:

- Wide spectral range
- End-mount light sensor
- Excellent long term stability
- Select either W/m² or BTU(ft²*h) units
- Automatic transmission measurement
- Wire length of the remote sensor
- Simple to use general data

98208 UVA/Solar Power /Light meter:

- Three (3) in one measurement
- Maximum, Minimum, Average function and data hold freezes readings
- Auto power off and adjustable from 0 to 99 minutes
- Backlight function and display real time clock
- Real zero function and REL(Relative) function
- Great for test PV modules or arrays in the field.
- Various application measuring light intensity at wafer plane of mask aligners

Supplied with :

- Meter x1 , Battery x1, Manual x 1 , box sleeve x1 (98206)
- Meter x1 , Battery x1 , Manual x1 , Carrying pouch x 1 , Light sensor probe x1 , UVA sensor probe x 1 , Solar power sensor probe x 1 (98208), AC/DC adaptor Voltage 9VDC (8~14 VDC Max), Socket :Pin positive, Ground casing external (Diameter 5.5mm internal diameter 2.1mm)



Solar power
98206

Specifications:	98206 Solar power meter
Display	3 1/2 digits. Max. indication 2000
Measure range	2000 W/m ² , 634BTU (ft ² * h)
Resolution	0.1 W/m ² , 0.1BTU/ (ft ² *h)
Accuracy	Typically within ± 10W/m ² [±3 BTU/(ft ² *h)] or ±5%, whichever is greater in sunlight; Additional temperature induced error ±0.38W/m ² / °C [0.12BTU/(ft ² *h)/°C] from 25°C
Sampling Time	Approx. 0.25 second
Operating temp. & RH	0°C to 50°C below 80% RH
Dimension	159 x 55 x 38 mm