

Features

	IR-98	IR-99
User selectable °C or °F	*	*
Data Hold & Auto Power Off	*	*
Overrange indication	*	*
Max, Min record	*	*
IR with probe temperature	*	*
IR with probe & clamp temperature		*

Specifications

		IR-98	IR-99
IR Temp. Range	-35°C to 260°C/	*	*
	-31°F to 500°F		
IR Temp. Resolution	0.1°C/°F	*	*
Optical Resolution	1:1 Distance to Spot size	*	*
Emissivity	Adjustable 0.10-1.0	*	*
Thermistor Temperature Range	-40°C to 260°C/	*	*
	-40°F to 500°F		
Resolution	0.1°C/°F	*	*
Clamp Temperature Range	-40°C to 200°C/		*
	-40°F to 392°F		
Response Time	Less than 1 second	*	*
Basic Accuracy	±2% of reading	*	*

Size(HxWxD): 140mm x 42mm x 25mm (IR-98)

Weight: 80g

Accessories:

CR2032 Button battery, Clamshell.

Size(HxWxD): 183mm x 52mm x 25mm(IR-99)

Weight: 109g

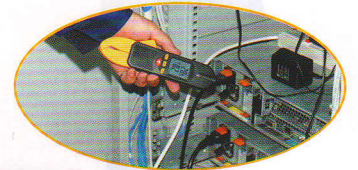
Accessories:

CR2032 Button battery, Clamshell.



Model IR-99

Model IR-98



8810 Series and IR-68 Multifunction InfraRed Thermometers

8810 Series and IR-68 Non-contact IR Thermometers are multifunctional and low cost, provide quick non-contact wide range temperature measurements. Targeting objects are easy with the bright laser beam.

- Unique flat surface(8810H/8811H/8812H)
- Built-in laser pointer identifies target area
- 16" Gooseneck detector is easy to measure the hard-to-reach areas (IR-68)

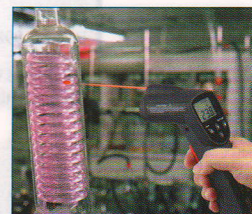
World patent

16" Gooseneck detector

CE EMC
EN: 61326
EN: 60825-1

Features

	8810H/8810	8811H/8811	8812H/8812	IR-68
16"Gooseneck detector				*
User selectable °C or °F	*	*	*	*
Laser targeting	*	*	*	*
Automatic Data Hold	*	*	*	*
Audible and visible Overrange indication		*	*	
Auto Power Off	*	*	*	*
Backlit LCD Display	*	*	*	*
Low battery indication	*	*	*	*
Wide range		*	*	*
Automatic range			*	*



Model IR-68



Model 8811H

Features

	8810H	8811H	8812H	IR-68
Range	-20°C to 350°C/	-20°C to 500°C/	-50°C to 650°C/	-50°C to 600°C
	-4°F to 662°F	-4°F to 932°F	-58°F to 1202°F	-58°F to 1112°F
Response time	Less than 1 second.	Less than 1 second.	Less than 1 second.	Less than 1 second.
Resolution	0.1° up to 200°, 1° over 200°	0.1° up to 200°, 1° over 200°	0.1° up to 200°, 1° over 200°	0.1° up to 200°, 1° over 200°
Basic Accuracy	± 2% of reading or ±2°C/±4°F	± 2% of reading or ±2°C/±4°F	± 2% of reading or ±2°C/±4°F	± 2% of reading or ±2°C/±4°F
Optical resolution	8:1 Distance to Spot size	8:1 Distance to Spot size	8:1 Distance to Spot size	8:1 Distance to Spot size
Emissivity	Fixed at 0.95	Fixed at 0.95	Fixed at 0.95	Fixed at 0.95

Size(HxWxD): 159mm x 79mm x 57mm

Weight: 180g

Accessories:

9V battery, Clamshell or gift box with carrying case