





# DSE5

## SERIES 10

### 1 - IDENTIFICATION CODE

<b>D</b>	<b>S</b>	<b>E</b>	<b>5</b>	<b>-</b>						<b>/ 10</b>	<b>-</b>			<b>K1</b>	
----------	----------	----------	----------	----------	--	--	--	--	--	-------------	----------	--	--	-----------	--

Directly operated directional control valve

Electric proportional control

Size ISO 4401-05 (CETOP 05)

Spool type:  
**C** = closed centers  
**A** = open centers

Spool nominal flow (see table 2)

Solenoid position (omit for configuration with two solenoids):  
**SA** = 1 solenoid on side A  
**SB** = 1 solenoid on side B

Manual override (see par. 10)

Coil electrical connection: plug for connector type DIN 43650 (**standard**)

**D12** = Nominal solenoid voltage 12V DC  
**D24** = Nominal solenoid voltage 24V DC

Seals:  
**N** = NBR seals for mineral oil (**standard**)  
**V** = FPM seals for special fluids

Series No. (from 10 to 19 sizes and mounting dimensions remain unchanged)

### 2 - CONFIGURATIONS

Valve configuration depends on the combination of the following elements:  
number of proportional solenoids, spool type, nominal flow rate.

2 solenoids configuration:  
3 positions with spring centering

**"SA"** configuration: 1 solenoid on side A.  
2 positions (central + external) with spring centering

**"SB"** configuration: 1 solenoid on side B.  
2 positions (central + external) with spring centering

<b>*</b>	Controlled flow with $\Delta p$ 10 bar P-T
<b>30</b>	30 l/min
<b>60</b>	60 l/min
<b>60/30</b>	60 (P-A) / 30 (B-T) l/min

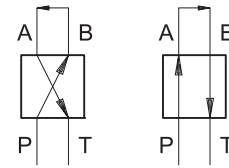


# DSE5

## SERIES 10

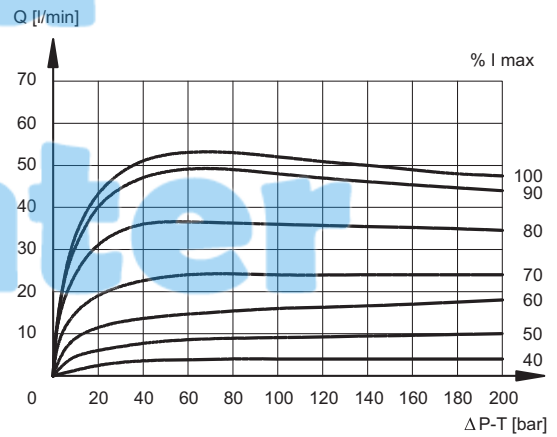
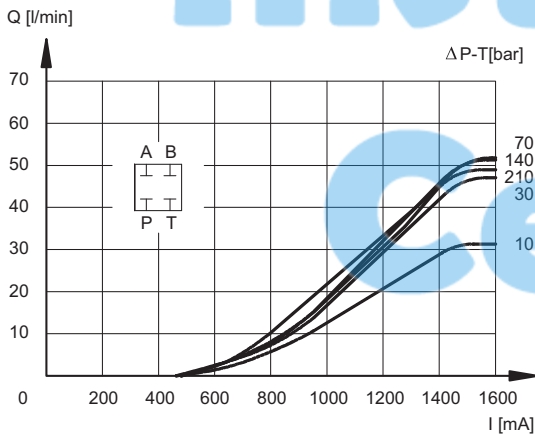
### 3 - CHARACTERISTIC CURVES (values measured with viscosity of 36 cSt at 50°C with valves connected to the relative electronic control units)

Typical constant flow rate control curves at  $\Delta p$  according to current supply to solenoid (D24 version, maximum current 1600 mA), measured for the various spool types available. The reference  $\Delta p$  values are measured between ports P and T on the valve.

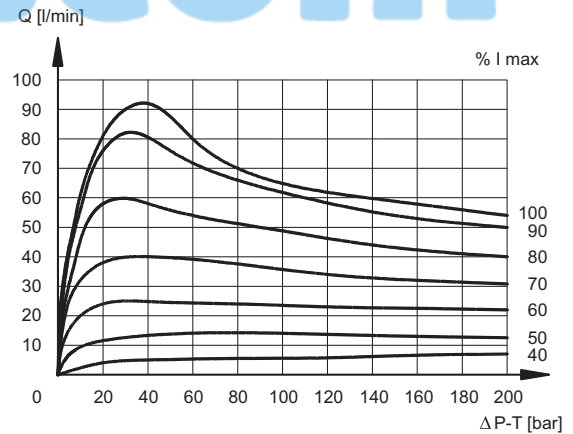
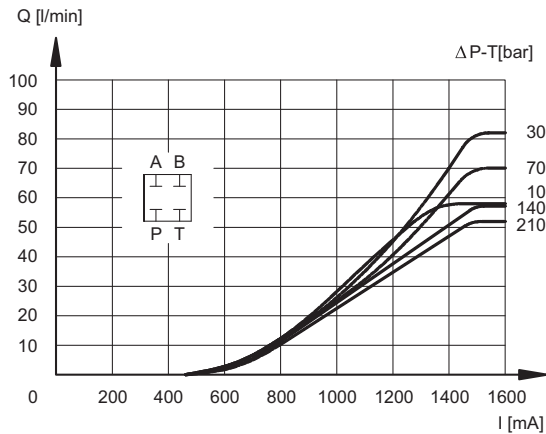


# Instru

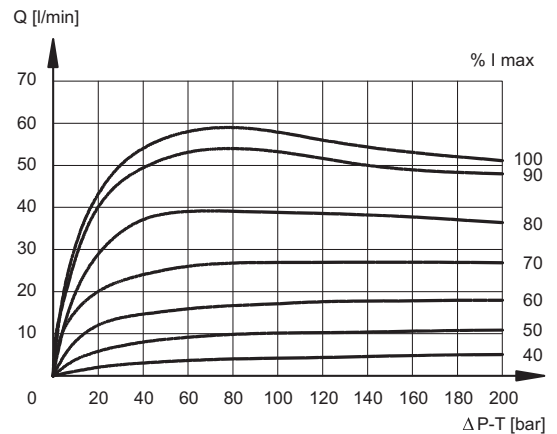
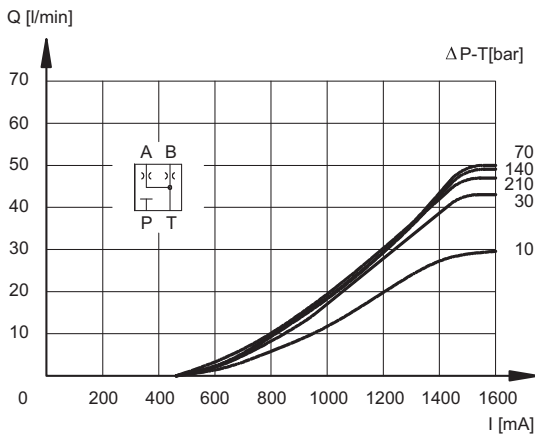
SPOOL TYPE C30



SPOOL TYPE C60



SPOOL TYPE A30

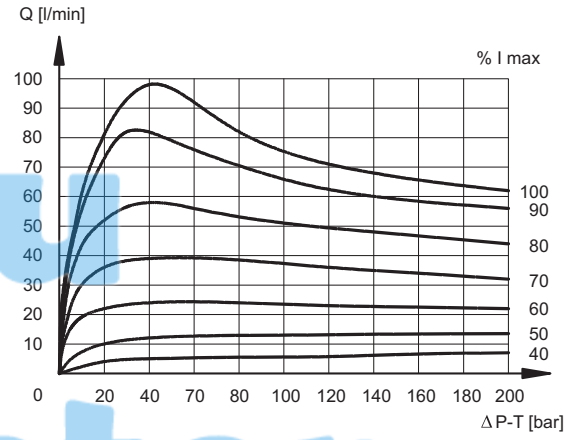
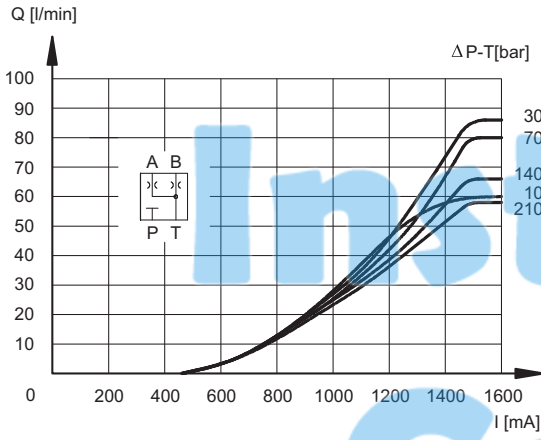




# DSE5

## SERIES 10

### SPOOL TYPE A60



InstruCenter.com



**4 - HYDRAULIC FLUIDS**

Use mineral oil-based hydraulic fluids HL or HM type, according to ISO 6743-4. For these fluids, use NBR seals (code N). For fluids HFDR type (phosphate esters) use FPM seals (code V). For the use of other fluid types such as HFA, HFB, HFC, please consult our technical department. Using fluids at temperatures higher than 80 °C causes a faster degradation of the fluid and of the seals characteristics. The fluid must be preserved in its physical and chemical characteristics.

**5 - ELECTRICAL CHARACTERISTICS**

**Proportional solenoid**

The proportional solenoid comprises two parts: tube and coil.

The tube, screwed to the valve body, contains the armature which is designed to maintain friction to a minimum thereby reducing hysteresis.

The coil is mounted on the tube secured by means of a lock nut.

It can be rotated through 360° depending on installation clearances.

<b>NOMINAL VOLTAGE</b>	VDC	<b>12</b>	<b>24</b>
<b>RESISTANCE (at 20°C)</b>	Ω	3 - 3.4	8.65
<b>MAXIMUM CURRENT</b>	A	2.6	1.6
<b>DUTY CYCLE</b>	100%		
<b>ELECTROMAGNETIC COMPATIBILITY (EMC)</b>	according to 2004/108/CE		
<b>CLASS OF PROTECTION:</b> atmospheric agents (CEI EN 60529) coil insulation (VDE 0580) Impregnation	IP 65 class H class F		

**6 - STEP RESPONSE** (measured with mineral oil with viscosity of 36 cSt at 50°C with the relative electronic control units)

Step response is the time taken for the valve to reach 90% of the set position value following a step change of reference signal.

The table shows typical response times tested with spool type C60 and Δp = 20 bar P-T.

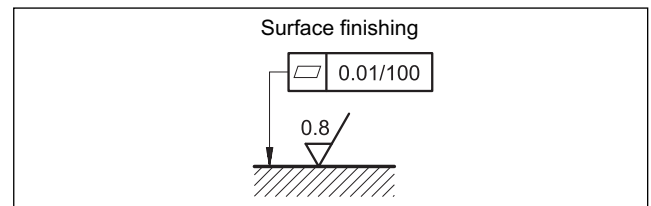
<b>REFERENCE SIGNAL STEP</b>	0→100%	100%→0
Step response [ms]		
<b>DSE5-A*</b> <b>DSE5-C*</b>	50	40

**7 - INSTALLATION**

DSE5 valves can be installed in any position without impairing correct operation.

Ensure that there is no air in the hydraulic circuit.

Valves are fixed by means of screws or tie rods on a flat surface with planarity and roughness equal to or better than those indicated in the relative symbols. If minimum values are not observed fluid can easily leak between the valve and support surface.

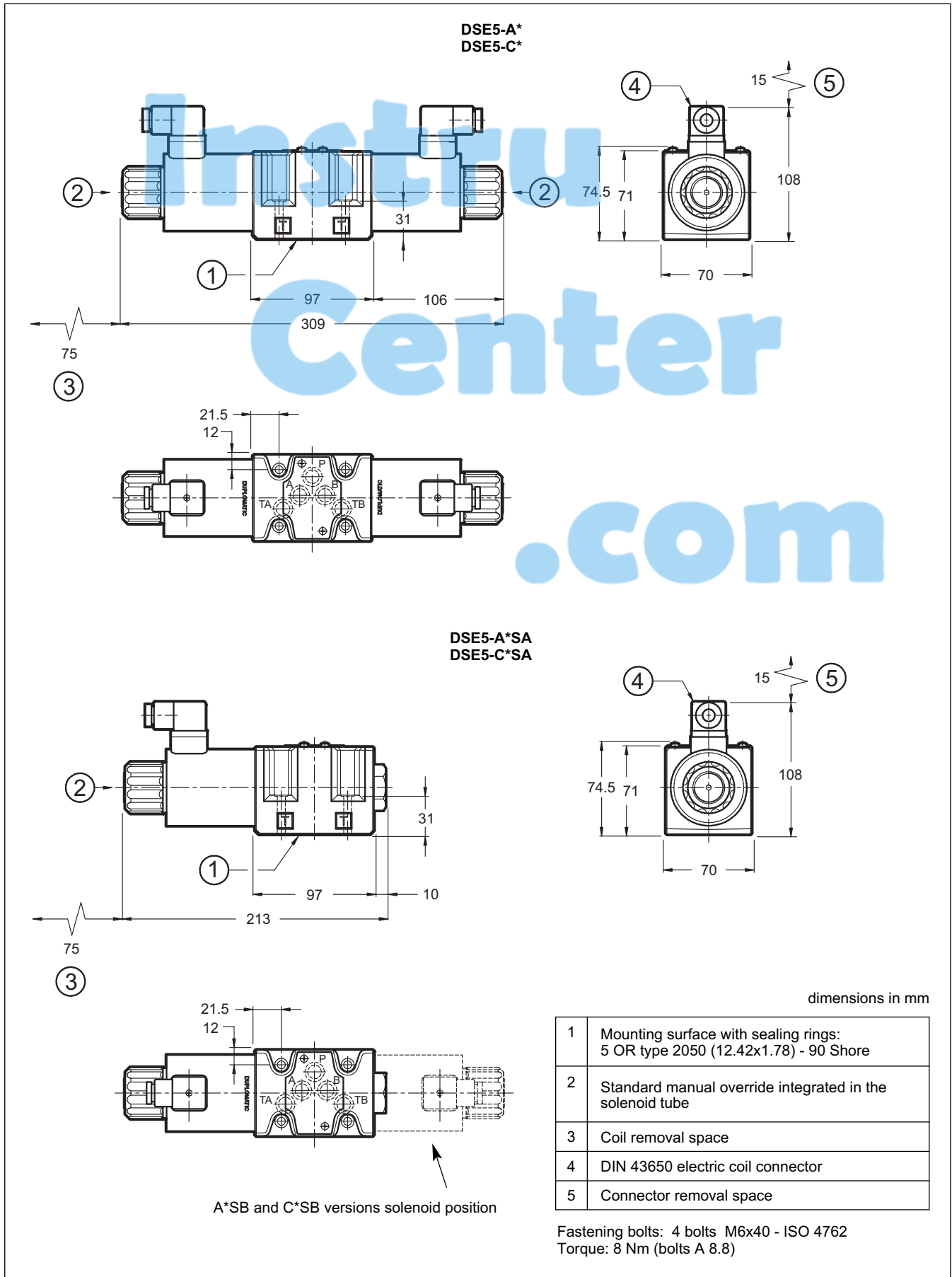




# DSE5

## SERIES 10

### 8 - OVERALL AND MOUNTING DIMENSIONS





# DSE5

## SERIES 10

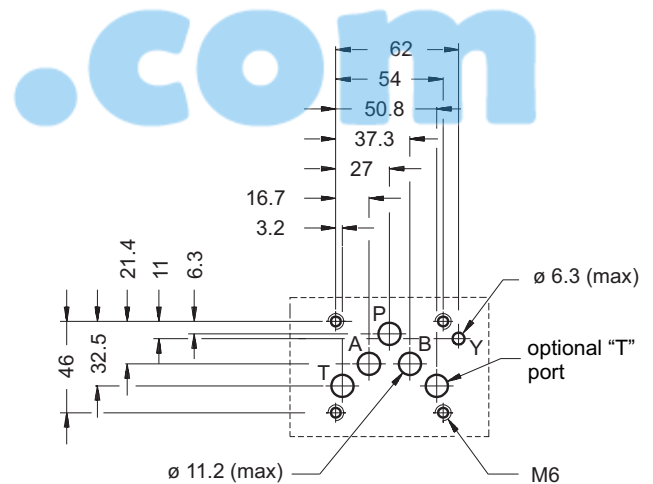
### 9 - SPECIAL VERSION WITH Y EXTERNAL SUBPLATE DRAIN PORT

#### Identification Code

	<b>D</b>	<b>S</b>	<b>E</b>	<b>5</b>	-		/	<b>10</b>	-		<b>K1</b>	/	<b>Y</b>
Directly operated directional control valve											Port for subplate external drain		
Electric proportional control											Coil electrical connection: plug for connector type DIN 43650 (standard)		
ISO 4401-05 (CETOP 05) size											D12 = Nominal solenoid voltage 12V DC D24 = Nominal solenoid voltage 24V DC		
Spool type: C = closed centers A = open centers											Seals: N = NBR seals for mineral oil (standard) V = FPM seals for special fluids		
Spool nominal flow (see table 2)											Series No. (from 10 to 19 sizes and mounting dimensions remain unchanged)		
Solenoid position (omit for configuration with two solenoids): SA = 1 solenoid on side A SB = 1 solenoid on side B													

This version allows the operation with pressures up to 320 bar on the valve T port.

It is a drain port Y realized on the valve mounting interface in compliance with ISO 4401-05-05-0-05 (CETOP 4.2-4-R05). The Y port is connected with the solenoid chamber: in this way the tubes are not stressed by the pressure operating on the valve T port.





# DSE5

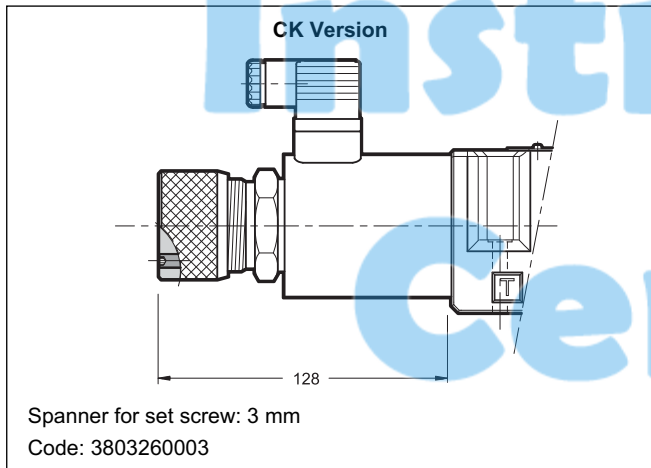
## SERIES 10

### 10 - MANUAL OVERRIDE

The standard valve has solenoids whose pin for the manual operation is integrated in the tube. The operation of this control must be executed with a suitable tool, minding not to damage the sliding surface.

The following manual override is available upon request:

- **CK** version, knob. When the set screw is screwed and its point is aligned with the edge of the knob, tighten the knob till it touches the spool: in this position the override is not engaged and the valve is de-energized. After adjusting the override, tighten the set screw in order to avoid the knob loosening.



### 11 - ELECTRONIC CONTROL UNITS

#### DSE5- \*\*SA (SB)

<b>EDC-131</b>	for solenoid 24V DC	plug version	see cat.89 120
<b>EDC-151</b>	for solenoid 12V DC		
<b>EDM-M131</b>	for solenoid 24V DC	DIN EN 50022 rail mounting	see cat. 89 250
<b>EDM-M151</b>	for solenoid 12V DC		

#### DSE5- A\*    DSE5-C\*

<b>EDM-M231</b>	for solenoid 24V DC	DIN EN 50022 rail mounting	see cat. 89 250
<b>EDM-M251</b>	for solenoid 12V DC		

### 12 - SUBPLATES (see cat. 51 000)

Type PMD4-AI4G with rear ports 3/4" BSP
Type PMD4-AL4G with side ports 1/2" BSP

**DUPLOMATIC**  
**OLEODINAMICA**

**DUPLOMATIC OLEODINAMICA S.p.A.**  
 20015 PARABIAGO (MI) • Via M. Re Depaolini 24  
 Tel. +39 0331.895.111  
 Fax +39 0331.895.339  
 www.diplomatic.com • e-mail: sales.exp@diplomatic.com